

**2010**

---

**STATISTICS OF**

---

**RECOVERED PAPER**

---

**IN JAPAN**

---



**Paper Recycling Promotion Center**

2011.9

# Index

The state of recovered paper .....	1
The general situation of paper & paperboard production and shipment .....	1
Trends in paper & paperboard production .....	2
Trends in consumption of recovered paper & wood pulp.....	2
Trends in recovered paper recovered rate & utilization rate.....	3
Trends in export & import of paper & paperboard .....	3
Trends in export & import of recovered paper.....	3
Trends in recovered paper recovery rate .....	4
Trends in consumption of recovered paper classified by grades .....	5
Trends in consumption of recovered paper classified by for paper or paperboard .....	6
Trends in the demand & supply of recovered paper for 2010.....	7
Trends in the consumption of recovered paper for papermaking for 2010.....	8
Trends in the utilization rate & consumption of fiber stocks for paper and paperboard .....	9
Trends in production of paper & paperboard .....	10
Trends in shipment of paper & paperboard .....	11
Consumption rate index per ton of fiber for paper production.....	12
Exports of recovered paper classified by countries.....	13
Imports of recovered paper classified by countries .....	16
Trends in imports of paper & paperboard .....	18
Trends in exports of paper & paperboard .....	19
Recovered paper generation / distribution route (2010).....	20
Roles of recovered paper recycling by agents .....	21
2008 Estimation of recovery rate by grades .....	22
The estimation rate of recovered paper consumption for paper production .....	23
Use of recovered paper .....	24
Trends of quantity and composition ratio of products used recovered paper in the field except paper manufacture .....	25
The list of Japanese standard qualities of recovered paper by Paper Recycling Promotion Center.....	26
Trends in price of recovered papers .....	28

Data source of:

1. Monthly Report of Paper, Pulp, Plastics Products and Rubber Products Statistics  
Research and Statistics Department, METI
2. Japan Export of Pulp and Paper by Commodity and Country  
Ministry of Finance
3. Japan Import of Pulp and Paper by Commodity and Country  
Ministry of Finance

(This statistics booklet is made of recycled paper.)

## The state of recovered paper (Jan.- Dec. 2010)

( METRIC TON,% )

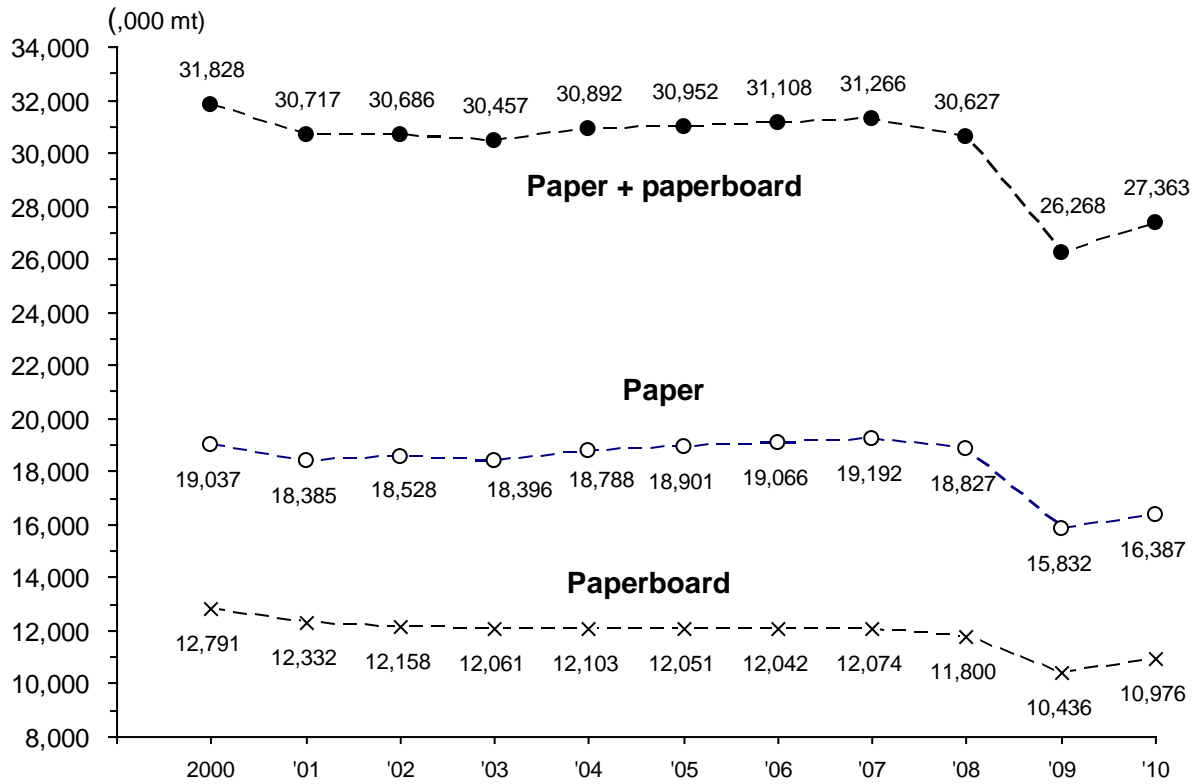
Grades	Supply	Ratio for the		
		year before %	Consumption	Ratio for the year before %
<b>Total</b>	<b>17,235,399</b>	<b>103.6</b>	<b>17,292,214</b>	<b>103.0</b>
Hard white shavings, white card	69,709	95.4	72,538	97.0
White woody shavings, white manila	54,416	103.6	54,812	103.5
Fine paper printed (incl. coated paper)	1,980,552	106.5	1,973,810	103.2
Kraft browns	63,783	98.4	63,125	93.2
Quires woody paper printed	148,791	89.5	150,826	89.8
Old news	4,386,613	98.7	4,385,974	98.3
Old magazines	2,292,487	99.7	2,297,633	98.7
Old corrugated containers	7,854,077	107.5	7,903,282	107.7
Box board cuttings	384,971	101.4	390,214	101.5

## The general situation of paper & paperboard production and shipment (Jan.-Dec. 2010)

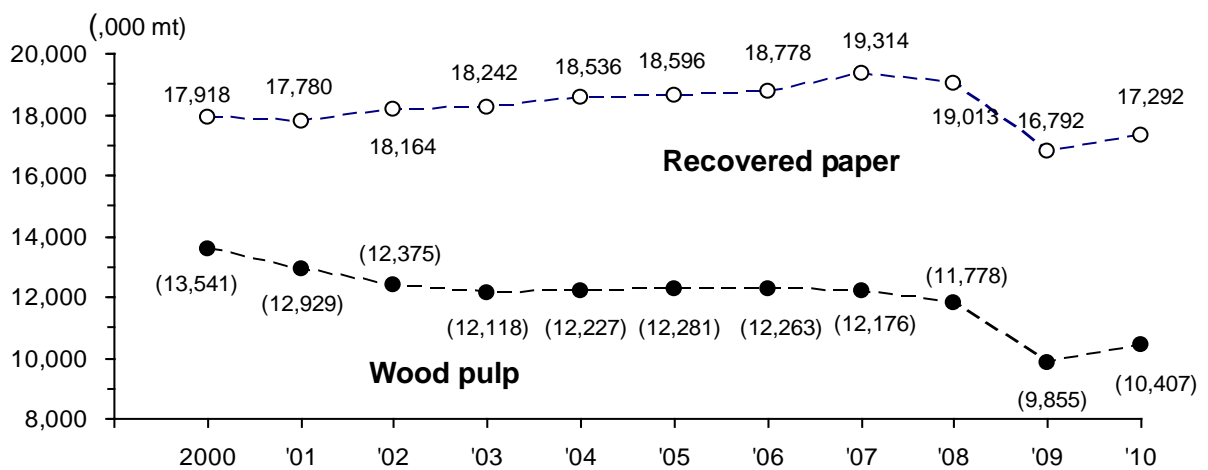
( METRIC TON,% )

Grades	Production	Ratio for the		
		Year before %	Shipment	Ratio for the Year before %
<b>Total</b>	<b>27,363,328</b>	<b>104.2</b>	<b>27,421,775</b>	<b>103.7</b>
<b>Paper total</b>	<b>16,386,761</b>	<b>103.5</b>	<b>16,448,738</b>	<b>102.8</b>
Newsprint	3,348,649	96.9	3,359,662	96.7
Printing paper, writing paper	9,547,045	104.7	9,591,552	104.0
Packaging paper	904,486	115.1	906,612	111.9
Household tissue	1,792,438	100.9	1,791,966	100.9
Other paper	794,143	114.2	798,946	112.6
<b>Paperboard total</b>	<b>10,976,567</b>	<b>105.2</b>	<b>10,973,037</b>	<b>104.9</b>
Liner and medium	8,647,486	105.3	8,647,279	105.0
White paperboard	1,517,353	101.8	1,518,758	102.9
Patent coated paperboard	155,628	106.0	155,521	103.4
Building board	187,994	104.4	187,011	102.6
Other paperboard	468,106	115.1	464,468	111.6

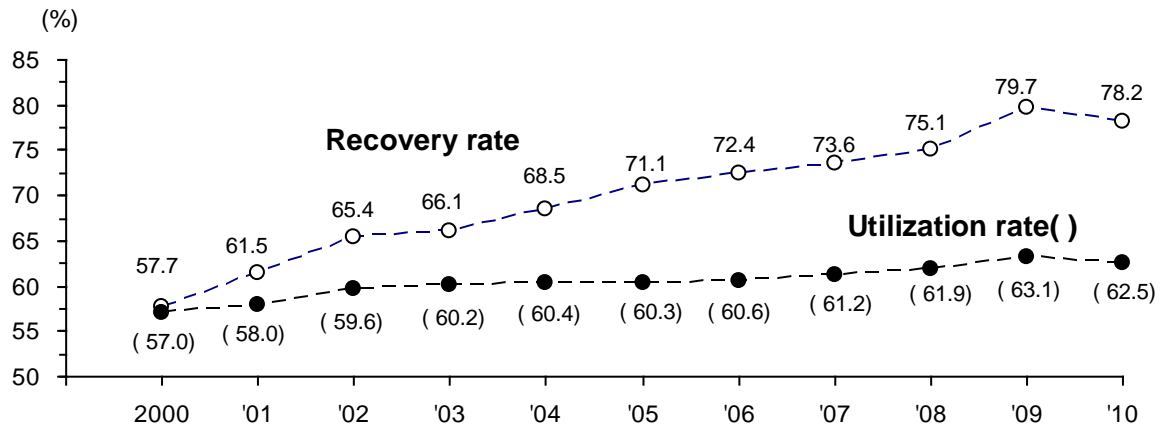
### Trends in paper & paperboard production



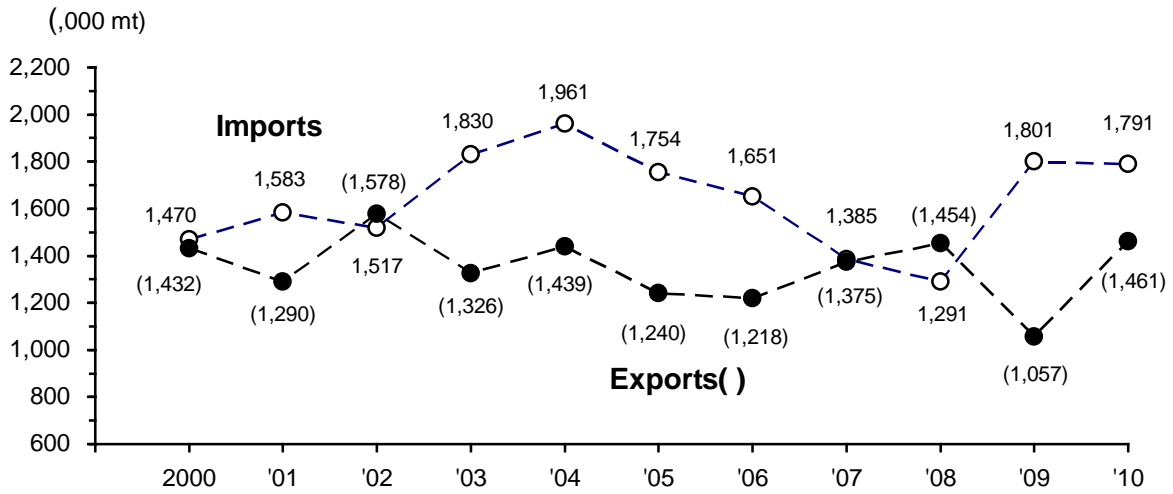
### Trends in consumption of recovered paper & wood pulp



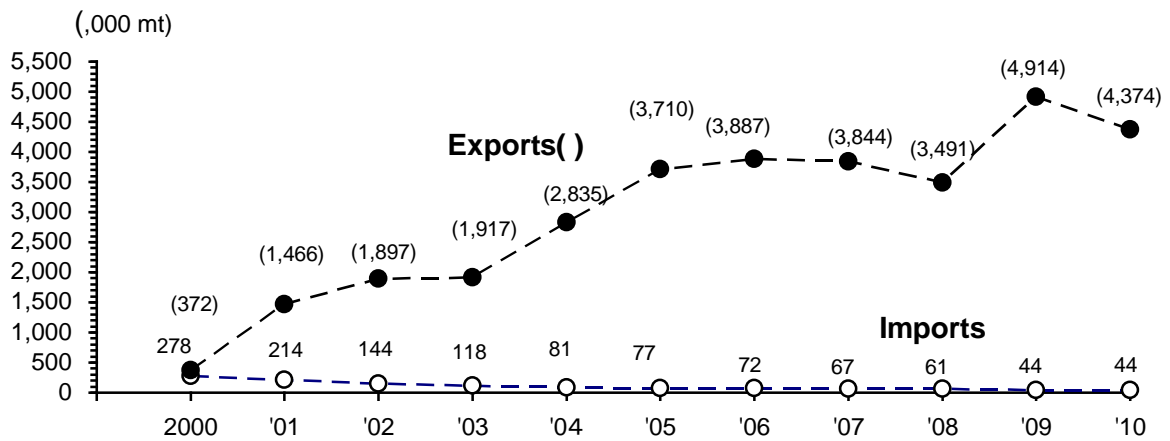
Trends in recovered paper recovery rate & utilization rate



Trends in exports & imports of paper and paperboard



Trends in exports & imports of recovered paper



**Table 1 Trends in recovered paper recovery rate**

( METRIC TON, % )

Year	Shipment			Imports B	Exports C	The Balance A+B-C=D	Imports of recovered paper E	Exports of recovered paper F	Recovered paper supply G	Deinked market pulp G'	Recovery G+G'-E+F=H	Recovery rate H / D(%)
	Paper	Paperboard	Total A									
1980	10,190,586	7,465,215	17,655,801	493,292	655,894	17,493,199	223,655	19,772	8,187,132	95,216	8,094,242	46.3
1981	10,127,589	7,055,087	17,182,676	488,331	673,173	16,997,834	80,519	82,577	7,951,875	85,361	8,065,868	47.5
1982	10,415,550	7,069,667	17,485,217	629,958	739,817	17,375,358	94,382	26,451	8,338,028	87,501	8,317,900	47.9
1983	10,905,189	7,477,247	18,382,436	683,149	737,826	18,327,759	277,277	2,123	9,179,528	91,401	8,995,775	49.1
1984	11,383,238	7,863,192	19,246,430	696,312	842,868	19,099,874	311,521	8,059	9,836,592	102,110	9,635,240	50.4
1985	11,736,473	8,632,570	20,369,043	701,258	868,920	20,201,381	300,162	17,660	10,325,984	107,303	10,150,785	50.2
1986	12,173,382	8,850,749	21,024,131	854,645	839,194	21,039,582	351,746	126,641	10,627,387	108,174	10,510,456	50.0
1987	12,851,254	9,690,627	22,541,881	866,017	814,217	22,593,681	616,004	59,458	11,630,725	123,601	11,197,780	49.6
1988	14,294,275	10,232,502	24,526,777	1,047,161	639,206	24,934,732	587,944	5,685	12,390,939	132,486	11,941,166	47.9
1989	15,514,127	11,036,780	26,550,907	1,175,921	543,164	27,183,664	438,186	50,693	13,334,816	150,921	13,098,244	48.2
1990	16,391,232	11,703,448	28,094,680	1,034,757	903,510	28,225,927	634,254	21,858	14,474,269	159,598	14,021,471	49.7
1991	16,983,337	11,847,664	28,831,001	1,079,157	1,043,754	28,866,404	851,146	2,642	15,357,999	157,758	14,667,253	50.8
1992	16,646,018	11,696,927	28,342,945	1,049,171	1,053,161	28,338,955	444,274	35,945	14,717,729	156,213	14,465,613	51.0
1993	16,245,181	11,586,004	27,831,185	1,090,322	797,205	28,124,302	417,205	46,380	14,609,730	147,063	14,385,968	51.2
1994	16,584,827	11,947,907	28,532,734	1,181,669	873,387	28,841,016	404,405	73,358	15,096,809	142,566	14,908,328	51.7
1995	17,457,108	12,201,806	29,658,914	1,274,747	912,051	30,021,610	478,723	41,519	15,769,597	142,378	15,474,771	51.5
1996	17,662,669	12,226,522	29,889,191	1,584,952	718,205	30,755,938	430,658	21,167	16,015,278	160,960	15,766,747	51.3
1997	18,166,815	12,634,852	30,801,667	1,363,121	974,941	31,189,847	361,830	311,768	16,428,620	165,108	16,543,666	53.0
1998	17,828,067	12,040,633	29,868,700	1,231,767	1,117,389	29,983,078	294,054	561,149	16,129,668	168,243	16,565,006	55.2
1999	18,551,600	12,317,303	30,868,903	1,168,816	1,415,004	30,622,715	300,321	288,459	16,893,838	178,589	17,060,565	55.7
2000	18,991,058	12,729,981	31,721,039	1,469,864	1,432,410	31,758,493	278,084	372,182	18,065,898	172,119	18,332,115	57.7
2001	18,388,774	12,389,807	30,778,581	1,583,069	1,289,712	31,071,938	213,628	1,466,182	17,680,393	189,214	19,122,161	61.5
2002	18,524,697	12,181,986	30,706,683	1,517,486	1,577,728	30,646,441	143,621	1,897,116	18,079,468	213,189	20,046,152	65.4
2003	18,325,529	12,100,448	30,425,977	1,829,880	1,326,277	30,929,580	117,680	1,970,607	18,387,288	202,398	20,442,613	66.1
2004	18,769,844	12,085,458	30,855,302	1,960,862	1,439,018	31,377,146	80,548	2,835,392	18,553,381	198,769	21,506,994	68.5
2005	18,812,510	12,056,384	30,868,894	1,753,714	1,240,119	31,382,489	77,445	3,710,482	18,505,253	181,456	22,319,746	71.1
2006	19,049,649	12,058,945	31,108,594	1,650,790	1,218,383	31,541,001	71,722	3,886,905	18,818,833	191,313	22,825,329	72.4
2007	19,268,247	12,045,997	31,314,244	1,374,672	1,385,119	31,303,797	66,537	3,843,931	19,381,046	166,201	23,324,641	74.5
2008	18,678,924	11,787,351	30,466,275	1,290,700	1,453,764	30,303,211	61,480	3,490,786	19,154,236	168,705	22,752,247	75.1
2009	15,993,253	10,456,771	26,450,024	1,801,284	1,057,181	27,194,127	43,958	4,914,123	16,643,548	150,206	21,663,919	79.7
2010	16,448,738	10,973,037	27,421,775	1,791,429	1,461,328	27,751,876	43,870	4,373,578	17,235,399	149,924	21,715,031	78.2

b) Removed the next of the buffer stock release. '76: 142,129t, '81: 10,830t, '82: 39,698t

c) Recovered paper used to product the denied market pulp was calculated as yield 80%. (G)

**Table 2 Trends in consumption of recovered paper classified by grades**

( METRIC TON, % )

Year	Item	Total	Hard white shavings, white card	White woody shavings, white manila	Fine paper printed	Kraft browns	Quires woody paper printed	Old news	Old magazines	Old corrugated containers	Box board cuttings
2003	Consumption	18,242,443	77,591	92,727	1,749,821	146,952	253,200	4,481,607	2,664,628	8,277,450	498,467
	Proportion	100.0	0.4	0.5	9.6	0.8	1.4	24.6	14.6	45.4	2.7
	Ratio of the year before %	100.4	84.1	110.9	99.9	81.3	91.2	100.0	100.2	101.9	96.9
	Contribute ratio/Growth of consumption	100.0	-18.6	11.6	-2.7	-43.1	-31.1	-0.1	7.2	197.1	-20.3
2004	Consumption	18,536,182	77,680	85,570	1,779,536	131,220	232,989	4,681,598	2,706,564	8,348,753	492,272
	Proportion	100.0	0.4	0.5	9.6	0.7	1.3	25.3	14.6	45.0	2.7
	Ratio of the year before %	101.6	100.1	92.3	101.7	89.3	92.0	104.5	101.6	100.9	98.8
	Contribute ratio/Growth of consumption	100.0	0.0	-2.4	10.1	-5.4	-6.9	68.1	14.3	24.3	-2.1
2005	Consumption	18,595,733	79,688	84,239	1,936,519	117,439	202,458	4,637,674	2,664,929	8,399,844	472,943
	Proportion	100.0	0.4	0.5	10.4	0.6	1.1	24.9	14.3	45.2	2.5
	Ratio of the year before %	100.3	102.6	98.4	108.8	89.5	86.9	99.1	98.5	100.6	96.1
	Contribute ratio/Growth of consumption	100.0	3.4	-2.2	263.6	-23.1	-51.3	-73.8	-69.9	85.8	-32.5
2006	Consumption	18,777,826	76,163	79,482	1,992,692	104,447	186,711	4,768,190	2,657,268	8,451,758	461,115
	Proportion	100.0	0.4	0.4	10.6	0.6	1.0	25.4	14.2	45.0	2.5
	Ratio of the year before %	101.0	95.6	94.4	102.9	88.9	92.2	102.8	99.7	100.6	97.5
	Contribute ratio/Growth of consumption	100.0	-1.9	-2.6	30.8	-7.1	-8.6	71.7	-4.2	28.5	-6.5
2007	Consumption	19,313,591	84,378	77,449	2,203,670	95,649	196,839	5,076,606	2,552,924	8,594,780	431,296
	Proportion	100.0	0.4	0.4	11.4	0.5	1.0	26.3	13.2	44.5	2.2
	Ratio of the year before %	102.9	110.8	97.4	110.6	91.6	105.4	106.5	96.1	101.7	93.5
	Contribute ratio/Growth of consumption	100.0	1.5	-0.4	39.4	-1.6	1.9	57.6	-19.5	26.7	-5.6
2008	Consumption	19,012,907	81,986	59,275	2,234,339	79,446	153,538	4,948,484	2,558,598	8,478,741	418,500
	Proportion	100.0	0.4	0.3	11.8	0.4	0.8	26.0	13.5	44.6	2.2
	Ratio of the year before %	98.4	97.2	76.5	101.4	83.1	78.0	97.5	100.2	98.6	97.0
	Contribute ratio/Growth of consumption	-100.0	-0.8	-6.0	10.2	-5.4	-14.4	-42.6	1.9	-38.6	-4.3
2009	Consumption	16,791,964	74,809	52,959	1,912,080	67,746	167,984	4,463,912	2,326,835	7,341,009	384,630
	Proportion	100.0	0.4	0.3	11.4	0.4	1.0	26.6	13.9	43.7	2.3
	Ratio of the year before %	88.3	91.2	89.3	85.6	85.3	109.4	90.2	90.9	86.6	91.9
	Contribute ratio/Growth of consumption	-100.0	-0.3	-0.3	-14.5	-0.5	0.7	-21.8	-10.4	-51.2	-1.5
2010	Consumption	17,292,214	72,538	54,812	1,973,810	63,125	150,826	4,385,974	2,297,633	7,903,282	390,214
	Proportion	100.0	0.4	0.3	11.4	0.4	0.9	25.4	13.3	45.7	2.3
	Ratio of the year before %	103.0	97.0	103.5	103.2	93.2	89.8	98.3	98.7	107.7	101.5
	Contribute ratio/Growth of consumption	100.0	-0.5	0.4	12.3	0.9	-3.4	-15.6	-5.8	112.4	1.1

Attn. -: decrease

**Table 3 Trends in consumption of recovered paper classified by for paper or paperboard**

( METRIC TON, % )

For	Year	Item	Total	Hard white shavings, white card	White woody shavings, white manila	Fine paper printed	Kraft browns	Quires woody paper printed	Old news	Old magazines	Old corrugated containers	Box board cuttings	
P a p e r	2007	Consumption	7,405,652	30,171	7,147	1,850,187	13,172	173,078	4,837,548	490,931	3,418	0	
		Ratio	For paper total	100.0	0.4	0.1	25.0	0.2	2.3	65.3	6.6	0.0	0.0
			For consumption	38.3	35.8	9.2	84.0	13.8	87.9	95.3	19.2	0.0	0.0
		Ratio of the year before	108.1	108.7	158.2	113.8	94.7	108.4	107.2	97.5	94.9	—	—
	Contribute ratio/ Growth of consumption	100.0	0.4	0.5	40.7	-0.1	2.4	58.5	-2.3	-0.0	0.0	0.0	
	2008	Consumption	7,307,439	25,075	5,432	1,867,531	11,470	131,244	4,730,167	533,145	3,375	0	
		Ratio	For paper total	100.0	0.3	0.1	25.6	0.2	1.8	64.7	7.3	0.0	0.0
			For consumption	38.4	30.6	9.2	83.6	14.4	85.5	95.6	20.8	0.0	0.0
		Ratio of the year before	98.7	83.1	76.0	100.9	87.1	75.8	97.8	108.6	98.7	—	—
	Contribute ratio/ Growth of consumption	-100.0	-5.2	-1.7	17.7	-1.7	-42.6	-109.3	43.0	-0.0	0.0	0.0	
	2009	Consumption	6,501,116	19,084	4,588	1,598,099	9,451	151,878	4,257,657	457,239	2,816	304	
		Ratio	For paper total	100.0	0.3	0.1	24.6	0.1	2.3	65.5	7.0	0.0	0.0
			For consumption	35.7	25.1	7.9	81.3	12.2	87.2	95.1	18.4	0.0	0.1
		Ratio of the year before	87.8	63.3	64.2	86.4	71.8	87.8	88.0	93.1	82.4	—	—
	Contribute ratio/ Growth of consumption	-100.0	-0.7	-0.1	-33.4	-0.3	2.6	-58.6	-9.4	-0.1	0.0	0.0	
	2010	Consumption	6,412,367	15,614	3,900	1,662,320	10,266	134,233	4,157,963	424,973	3,098	0	
		Ratio	For paper total	100.0	0.2	0.1	25.9	0.2	2.1	64.8	6.6	0.0	0.0
			For consumption	37.1	21.5	7.1	84.2	16.3	89.0	94.8	18.5	0.0	0.0
		Ratio of the year before	98.6	81.8	85.0	104.0	108.6	88.4	97.7	92.9	110.0	0.0	0.0
	Contribute ratio/ Growth of consumption	-100.0	-3.9	-0.8	72.4	0.9	-19.9	-112.3	-36.4	0.3	-0.3	-0.3	
P a p e r  b o a r d	2007	Consumption	11,907,939	54,207	70,302	353,483	82,477	23,761	239,058	2,061,993	8,591,362	431,296	
		Ratio	For paperboard total	100.0	0.5	0.6	3.0	0.7	0.2	2.0	17.3	72.1	3.6
			For consumption	61.7	64.2	90.8	16.0	86.2	12.1	4.7	80.8	100.0	100.0
		Ratio of the year before	99.9	112.0	93.8	96.2	91.1	87.9	94.2	95.7	101.7	93.5	93.5
	Contribute ratio/ Growth of consumption	-100.0	33.9	-27.2	-81.3	-47.1	-19.2	-86.3	-535.4	837.0	-174.3	-174.3	
	2008	Consumption	11,705,468	56,911	53,843	366,808	67,976	22,294	218,317	2,025,453	8,475,366	418,500	
		Ratio	For paperboard total	100.0	0.5	0.5	3.1	0.6	0.2	1.9	17.3	72.4	3.6
			For consumption	61.6	69.4	90.8	16.4	85.6	14.5	4.4	79.2	100.0	100.0
		Ratio of the year before	98.3	105.0	76.6	103.8	82.4	93.8	91.3	98.2	98.6	97.0	97.0
	Contribute ratio/ Growth of consumption	-100.0	1.3	-8.1	6.6	-7.2	-0.7	-10.2	-18.0	-57.3	-6.3	-6.3	
	2009	Consumption	10,290,848	55,725	48,371	313,981	58,295	16,106	206,255	1,869,596	7,338,193	384,326	
		Ratio	For paperboard total	100.0	0.5	0.5	3.1	0.6	0.2	2.0	18.2	71.3	3.7
			For consumption	61.3	74.5	91.3	16.4	86.0	9.6	4.6	80.3	100.0	99.9
		Ratio of the year before	87.9	97.9	89.8	85.6	85.8	72.2	94.5	92.3	86.6	91.8	91.8
	Contribute ratio/ Growth of consumption	-100.0	-0.1	-0.4	-3.7	-0.7	-0.4	-0.9	-11.0	-80.4	-2.4	-2.4	
	2010	Consumption	10,879,847	56,924	50,912	311,490	52,859	16,593	228,011	1,872,660	7,900,184	390,214	
		Ratio	For paperboard total	100.0	0.5	0.5	2.9	0.5	0.2	2.1	17.2	72.6	3.6
			For consumption	62.9	78.5	92.9	15.8	83.7	11.0	5.2	81.5	100.0	100.0
		Ratio of the year before	105.7	102.2	105.3	99.2	90.7	103.0	110.5	100.2	107.7	101.5	101.5
	Contribute ratio/ Growth of consumption	100.0	0.2	0.4	-0.4	-0.9	0.1	3.7	0.5	95.4	1.0	1.0	

See the table 2 for consumption total. -: decrease

**Table 4 Trends in the demand & supply of recovered paper for 2010**

( METRIC TON, % )

Year. Mon.	Total				Hard white shavings, white card				White woody shavings, white manila				Fine paper printed (incl.coated paper )				Kraft paper			
	Supply	Consumption A	Stock B	B/A (%)	Supply	Consumption A	Stock B	B/A (%)	Supply	Consumption A	Stock B	B/A (%)	Supply	Consumption A	Stock B	B/A (%)	Supply	Consumption A	Stock B	B/A (%)
2008 total	19,154,236	19,012,907	980,618		87,211	81,986	10,827		58,241	59,275	5,635		2,288,113	2,234,339	158,631		81,304	79,446	11,075	
2009 total	16,643,548	16,791,964	832,202		73,088	74,809	9,106		52,538	52,959	5,214		1,859,625	1,912,080	106,176		64,826	67,746	8,155	
Ratio of the year before	86.9	88.3	84.9		83.8	91.2	84.1		90.2	89.3	92.5		81.3	85.6	66.9		79.7	85.3	73.6	
2009 Dec.	1,482,902	1,426,123	832,202	58.4	5,918	6,407	9,106	142.1	4,329	4,643	5,214	112.3	166,929	167,945	106,176	63.2	5,480	5,716	8,155	142.7
2010 Jan.	1,306,906	1,336,934	802,174	60.0	6,260	5,567	9,799	176.0	4,434	4,271	5,377	125.9	153,505	154,967	104,714	67.6	5,307	5,227	8,235	157.5
Feb.	1,265,313	1,315,898	751,589	57.1	5,259	5,667	9,391	165.7	4,128	4,024	5,481	136.2	159,174	157,656	106,232	67.4	5,384	5,424	8,195	151.1
Mar.	1,405,975	1,470,135	687,429	46.8	6,445	6,155	9,681	157.3	4,768	4,344	5,905	135.9	176,396	179,003	103,625	57.9	5,357	5,448	8,104	148.8
Apr.	1,520,813	1,522,860	685,382	45.0	5,729	6,065	9,345	154.1	4,272	4,790	5,387	112.5	173,948	176,394	101,179	57.4	5,901	5,155	8,850	171.7
May	1,452,838	1,470,828	667,392	45.4	5,567	6,011	8,901	148.1	4,627	4,290	5,724	133.4	158,275	170,266	89,188	52.4	5,313	5,082	9,081	178.7
Jun.	1,509,774	1,469,709	707,457	48.1	6,076	6,289	8,688	138.1	4,720	5,177	5,267	101.7	170,057	163,336	95,909	58.7	5,530	5,334	9,277	173.9
Jul.	1,504,374	1,462,880	748,951	51.2	5,459	6,261	8,688	126.0	4,334	4,439	5,162	116.3	162,833	155,072	103,670	66.9	5,204	5,434	9,047	166.5
Aug.	1,416,366	1,375,200	790,117	57.5	5,367	5,768	7,485	129.8	4,346	4,714	4,794	101.7	153,435	153,821	103,284	67.1	4,596	4,442	9,201	207.1
Sep.	1,428,647	1,438,422	780,342	54.2	5,347	6,124	6,708	109.5	4,681	4,755	4,720	99.3	164,223	164,753	102,754	62.4	5,378	5,244	9,335	178.0
Oct.	1,484,182	1,541,999	722,525	46.9	6,327	6,208	6,827	110.0	5,109	5,068	4,761	93.9	170,194	168,400	104,548	62.1	5,314	5,411	9,238	170.7
Nov.	1,464,491	1,457,924	729,092	50.0	5,997	7,069	5,755	81.4	4,413	4,641	4,533	97.7	167,952	167,187	105,313	63.0	5,310	5,433	9,115	167.8
Dec.	1,475,720	1,429,425	775,387	54.2	5,876	5,354	6,277	117.2	4,584	4,299	4,818	112.1	170,560	162,955	112,918	69.3	5,189	5,491	8,813	160.5
2010 total	17,235,399	17,292,214			69,709	72,538			54,416	54,812			1,980,552	1,973,810			63,783	63,125		
Ratio of the year before	103.6	103.0			95.4	97.0			103.6	103.5			106.5	103.2			98.4	93.2		

Year. Mon.	Quires woody paper printed				Old news				Old magazines				Old corrugated containers				Box board cuttings			
	Supply	Consumption A	Stock B	B/A (%)	Supply	Consumption A	Stock B	B/A (%)	Supply	Consumption A	Stock B	B/A (%)	Supply	Consumption A	Stock B	B/A (%)	Supply	Consumption A	Stock B	B/A (%)
2008 total	195,073	196,839	7,942		5,112,229	5,076,606	283,910		2,553,820	2,552,924	110,708		8,607,199	8,594,780	288,372		431,549	431,296	22,012	
2009 total	166,268	167,984	10,664		4,442,348	4,464,112	260,858		2,299,240	2,326,835	104,780		7,306,034	7,341,009	302,551		379,581	384,630	24,698	
year before	85.2	85.3	134.3		86.9	87.9	91.9		90.0	91.1	94.6		84.9	85.4	104.9		88.0	89.2	112.2	
2009 Dec.	13,274	11,222	10,664	95.0	392,603	385,348	260,858	67.7	201,213	190,619	104,780	55.0	659,620	621,397	302,551	48.7	33,536	32,826	24,698	75.2
2010 Jan.	11,268	12,298	9,634	78.3	347,478	368,156	240,180	65.2	178,125	177,923	104,982	59.0	571,440	577,760	296,231	51.3	29,089	30,765	23,022	74.8
Feb.	12,761	12,616	9,779	77.5	329,258	353,955	215,483	60.9	162,118	176,450	90,650	51.4	558,851	569,275	285,807	50.2	28,380	30,831	20,571	66.7
Mar.	13,580	13,159	10,200	77.5	359,744	378,493	196,734	52.0	183,763	191,261	83,152	43.5	623,040	660,026	248,821	37.7	32,882	32,246	21,207	65.8
Apr.	12,662	12,742	10,120	79.4	383,343	370,679	209,398	56.5	214,336	198,200	99,288	50.1	685,346	715,255	218,912	30.6	35,276	33,580	22,903	68.2
May	11,064	12,514	8,670	69.3	372,595	384,787	197,206	51.3	200,885	198,216	101,957	51.4	663,478	656,808	225,582	34.3	31,034	32,854	21,083	64.2
Jun.	12,585	12,999	8,256	63.5	374,793	360,479	211,520	58.7	206,012	204,853	103,116	50.3	697,195	679,200	243,577	35.9	32,806	32,042	21,847	68.2
Jul.	12,749	10,685	10,320	96.6	392,832	358,746	245,606	68.5	198,142	200,189	101,069	50.5	690,245	689,274	244,548	35.5	32,576	32,780	21,643	66.0
Aug.	11,664	12,823	9,161	71.4	369,810	365,356	250,060	68.4	182,045	176,764	106,350	60.2	655,710	622,979	277,279	44.5	29,393	28,533	22,503	78.9
Sep.	13,186	13,932	8,415	60.4	353,549	353,513	250,096	70.7	183,668	192,827	97,191	50.4	665,168	663,874	278,573	42.0	33,447	33,400	22,550	67.5
Oct.	12,986	13,081	8,320	63.6	369,408	380,257	239,247	62.9	201,680	206,611	92,260	44.7	679,081	722,080	235,574	32.6	34,083	34,883	21,750	62.4
Nov.	12,111	12,341	8,090	65.6	366,735	352,642	253,340	71.8	194,023	193,255	93,028	48.1	675,367	682,630	228,311	33.4	32,583	32,726	21,607	66.0
Dec.	12,175	11,636	8,629	74.2	367,068	358,911	261,497	72.9	187,690	181,084	99,634	55.0	689,156	664,121	253,346	38.1	33,422	35,574	19,455	54.7
2010 total	148,791	150,826			4,386,613	4,385,974			2,292,487	2,297,633			7,854,077	7,903,282			384,971	390,214		
Ratio of the year before	89.5	89.8			98.7	98.2			99.7	98.7			107.5	107.7			101.4	101.5		

Attn. Supply=Consumption+Stock-The stock of the previous month

**Table 5 Trends in the consumption of recovered paper for papermaking for 2010**

( METRIC TON, % )

Year. Mon.	Total			Hard white shavings, white card			White woody shavings, white manila			Fine paper printed (incl.coated paper )			Kraft paper		
	For paper	For paperboard	Total	For paper	For paperboard	Total	For paper	For paperboard	Total	For paper	For paperboard	Total	For paper	For paperboard	Total
2008 total	7,307,439	11,705,468	19,012,907	25,075	56,911	81,986	5,432	53,843	59,275	1,867,531	366,808	2,234,339	11,470	67,976	79,446
2009 total	6,500,812	10,290,848	16,791,660	19,084	55,725	74,809	4,588	48,371	52,959	1,598,099	313,981	1,912,080	9,451	58,295	67,746
Ratio of the before year	89.0	87.9	88.3	76.1	97.9	91.2	84.5	89.8	89.3	85.6	85.6	85.6	82.4	85.8	85.3
Proportion	38.7	61.3	100.0	25.5	74.5	100.0	8.7	91.3	100.0	83.6	16.4	100.0	14.0	86.0	100.0
2009 Dec.	559,292	866,831	1,426,123	1,326	5,081	6,407	337	4,306	4,643	140,358	27,587	167,945	868	4,848	5,716
2010 Jan.	533,060	803,874	1,336,934	1,217	4,350	5,567	291	3,980	4,271	130,998	23,969	154,967	765	4,462	5,227
Feb.	518,160	797,738	1,315,898	1,154	4,513	5,667	318	3,706	4,024	133,096	24,560	157,656	792	4,632	5,424
Mar.	558,914	911,221	1,470,135	1,331	4,824	6,155	338	4,006	4,344	150,174	28,829	179,003	924	4,524	5,448
Apr.	546,522	976,338	1,522,860	1,276	4,789	6,065	272	4,518	4,790	148,554	27,840	176,394	835	4,320	5,155
May	562,195	908,633	1,470,828	1,262	4,749	6,011	325	3,965	4,290	143,225	27,041	170,266	819	4,263	5,082
Jun.	528,813	940,896	1,469,709	1,435	4,854	6,289	322	4,855	5,177	136,302	27,034	163,336	976	4,358	5,334
Jul.	521,048	941,832	1,462,880	1,287	4,974	6,261	271	4,168	4,439	130,911	24,161	155,072	835	4,599	5,434
Aug.	529,565	845,635	1,375,200	1,375	4,393	5,768	425	4,289	4,714	131,191	22,630	153,821	802	3,640	4,442
Sep.	519,699	918,723	1,438,422	1,185	4,939	6,124	289	4,466	4,755	137,158	27,595	164,753	894	4,350	5,244
Oct.	549,111	992,888	1,541,999	1,296	4,912	6,208	341	4,727	5,068	141,073	27,327	168,400	831	4,580	5,411
Nov.	521,048	936,876	1,457,924	1,515	5,554	7,069	349	4,292	4,641	141,323	25,864	167,187	850	4,583	5,433
Dec.	524,232	905,193	1,429,425	1,281	4,073	5,354	359	3,940	4,299	138,315	24,640	162,955	943	4,548	5,491
2010 total	6,412,367	10,879,847	17,292,214	15,614	56,924	72,538	3,900	50,912	54,812	1,662,320	311,490	1,973,810	10,266	52,859	63,125
Ratio of the before year	98.6	105.7	103.0	81.8	102.2	97.0	85.0	105.3	103.5	104.0	99.2	103.2	108.6	90.7	93.2
Proportion	37.1	62.9	100.0	21.5	78.5	100.0	7.1	92.9	100.0	84.2	15.8	100.0	16.3	83.7	100.0

Year. Mon.	Quires woody paper printed			Old news			Old magazines			Old corrugated containers			Box board cuttings		
	For paper	For paperboard	Total	For paper	For paperboard	Total	For paper	For paperboard	Total	For paper	For paperboard	Total	For paper	For paperboard	Total
2008 total	131,244	22,294	153,538	4,730,167	218,317	4,948,484	533,145	2,025,453	2,558,598	3,375	8,475,366	8,478,741		418,500	418,500
2009 total	151,878	16,106	167,984	4,257,657	206,255	4,463,912	457,239	1,869,596	2,326,835	2,816	7,338,193	7,341,009		384,326	384,326
Ratio of the before year	115.7	72.2	109.4	90.0	94.5	90.2	85.8	92.3	90.9	83.4	86.6	86.6		91.8	91.8
Proportion	90.4	9.6	100.0	95.4	4.6	100.0	19.7	80.3	100.0	0.0	100.0	100.0		100.0	100.0
2009 Dec.	10,078	1,144	11,222	368,596	16,752	385,348	37,540	153,079	190,619	189	621,208	621,397		32,826	32,826
2010 Jan.	10,950	1,348	12,298	352,083	16,073	368,156	36,549	141,374	177,923	207	577,553	577,760		30,765	30,765
Feb.	11,337	1,279	12,616	337,818	16,137	353,955	33,414	143,036	176,450	231	569,044	569,275		30,831	30,831
Mar.	11,633	1,526	13,159	359,542	18,951	378,493	34,697	156,564	191,261	275	659,751	660,026		32,246	32,246
Apr.	11,372	1,370	12,742	348,579	22,100	370,679	35,369	162,831	198,200	265	714,990	715,255		33,580	33,580
May	11,144	1,370	12,514	367,472	17,315	384,787	37,752	160,464	198,216	196	656,612	656,808		32,854	32,854
Jun.	11,758	1,241	12,999	342,293	18,186	360,479	35,412	169,441	204,853	315	678,885	679,200		32,042	32,042
Jul.	9,409	1,276	10,685	341,355	17,391	358,746	36,717	163,472	200,189	263	689,011	689,274		32,780	32,780
Aug.	11,536	1,287	12,823	347,216	18,140	365,356	36,743	140,021	176,764	277	622,702	622,979		28,533	28,533
Sep.	12,381	1,551	13,932	332,280	21,233	353,513	35,220	157,607	192,827	292	663,582	663,874		33,400	33,400
Oct.	11,529	1,552	13,081	356,560	23,697	380,257	37,220	169,391	206,611	261	721,819	722,080		34,883	34,883
Nov.	10,912	1,429	12,341	333,361	19,281	352,642	32,455	160,800	193,255	283	682,347	682,630		32,726	32,726
Dec.	10,272	1,364	11,636	339,404	19,507	358,911	33,425	147,659	181,084	233	663,888	664,121		35,574	35,574
2010 total	134,233	16,593	150,826	4,157,963	228,011	4,385,974	424,973	1,872,660	2,297,633	3,098	7,900,184	7,903,282		390,214	390,214
Ratio of the before year	88.4	103.0	89.8	97.7	110.5	98.3	92.9	100.2	98.7	110.0	107.7	107.7		101.5	101.5
Proportion	89.0	11.0	100.0	94.8	5.2	100.0	18.5	81.5	100.0	0.0	100.0	100.0		100.0	100.0

Attn. monthly data and total in 2009(January-December) changed to a final statistics data referring to the pulp and paper annual report (2011 versions) by METI

**Table 6 Trends in the utilization rate & consumption of fiber stocks for paper or paperboard**

( METRIC TON,% )

Year	For Stocks	Total			Paper			Paperboard					
		Total	Proportion	Ratio of the year before	Total	Proportion	Ratio of the year before	Total	Proportion	Ratio of the year before			
2001	Wood pulp	12,929,392	100.0	41.8	95.5	11,673,496	90.3	66.1	96.3	1,255,896	9.7	9.5	88.7
	Market Pulp(DIP)	149,292	100.0	0.5	109.2	136,965	91.7	0.8	103.1	12,327	8.3	0.1	320.8
	Recovered paper	17,779,567	100.0	57.5	99.2	5,830,990	32.8	33.0	104.0	11,948,577	67.2	90.2	97.1
	Other stocks	51,401	100.0	0.2	96.8	25,413	49.4	0.1	92.8	25,988	50.6	0.2	101.1
	Total	30,909,652	100.0	100.0	97.7	17,666,864	57.2	100.0	98.7	13,242,788	42.8	100.0	96.3
2002	Wood pulp	12,374,568	100.0	40.2	95.7	11,229,711	90.7	63.6	96.2	1,144,857	9.3	8.7	91.2
	Market Pulp(DIP)	169,588	100.0	0.6	113.6	141,023	83.2	0.8	103.0	28,565	16.8	0.2	231.7
	Recovered paper	18,163,747	100.0	59.1	102.2	6,249,278	34.4	35.4	107.2	11,914,469	65.6	90.9	99.7
	Other stocks	43,798	100.0	0.1	85.2	24,021	54.8	0.1	94.5	19,777	45.2	0.2	76.1
	Total	30,751,701	100.0	100.0	99.5	17,644,033	57.4	100.0	99.9	13,107,668	42.6	100.0	99.0
2003	Wood pulp	12,117,765	100.0	39.7	97.9	11,122,806	91.8	63.3	99.0	994,959	8.2	7.7	86.9
	Market Pulp(DIP)	165,006	100.0	0.5	97.3	135,262	82.0	0.8	95.9	29,744	18.0	0.2	104.1
	Recovered paper	18,242,443	100.0	59.7	100.4	6,283,015	34.4	35.8	100.5	11,959,428	65.6	92.0	100.4
	Other stocks	34,841	100.0	0.1	79.5	24,077	69.1	0.1	100.2	10,764	30.9	0.1	54.4
	Total	30,560,055	100.0	100.0	99.4	17,565,160	57.5	100.0	99.6	12,994,895	42.5	100.0	99.1
2004	Wood pulp	12,227,400	100.0	39.5	100.9	11,255,753	92.1	62.7	101.2	971,647	7.9	7.5	97.7
	Market Pulp(DIP)	159,510	100.0	0.5	96.7	127,020	79.6	0.7	93.9	32,490	20.4	0.2	109.2
	Recovered paper	18,536,182	100.0	59.9	101.6	6,543,631	35.3	36.5	104.1	11,992,551	64.7	92.2	100.3
	Other stocks	33,743	100.0	0.1	96.8	22,526	66.8	0.1	93.6	11,217	33.2	0.1	104.2
	Total	30,956,835	100.0	100.0	101.3	17,948,930	58.0	100.0	102.2	13,007,905	42.0	100.0	100.1
2005	Wood pulp	12,281,157	100.0	39.5	100.4	11,333,708	92.3	62.4	100.7	947,449	7.7	7.3	97.5
	Market Pulp(DIP)	146,917	100.0	0.5	92.1	121,490	82.7	0.7	95.6	25,427	17.3	0.2	78.3
	Recovered paper	18,595,733	100.0	59.9	100.3	6,687,132	36.0	36.8	102.2	11,908,601	64.0	92.4	99.3
	Other stocks	32,925	100.0	0.1	97.6	21,359	64.9	0.1	94.8	11,566	35.1	0.1	103.1
	Total	31,056,732	100.0	100.0	100.3	18,163,689	58.5	100.0	101.2	12,893,043	41.5	100.0	99.1
2006	Wood pulp	12,263,478	100.0	39.3	99.9	11,329,836	92.4	61.8	100.0	933,642	7.6	7.2	98.5
	Market Pulp(DIP)	154,325	100.0	0.5	105.0	136,781	88.6	0.7	112.6	17,544	11.4	0.1	69.0
	recovered paper	18,777,826	100.0	60.1	101.0	6,852,778	36.5	37.4	102.5	11,925,048	63.5	92.5	100.1
	Other stocks	29,382	100.0	0.1	89.2	17,694	60.2	0.1	82.8	11,688	39.8	0.1	101.1
	Total	31,225,011	100.0	100.0	100.5	18,337,089	58.7	100.0	101.0	12,887,922	41.3	100.0	100.0
2007	Wood pulp	12,175,959	100.0	38.5	99.3	11,203,770	92.0	59.8	98.9	972,189	8.0	7.5	104.1
	Market Pulp(DIP)	131,993	100.0	0.4	85.5	116,195	88.0	0.6	84.9	15,798	12.0	0.1	90.0
	recovered paper	19,313,591	100.0	61.0	102.9	7,405,652	38.3	39.5	108.1	11,907,939	61.7	92.3	99.9
	Other stocks	29,310	100.0	0.1	99.8	18,475	63.0	0.1	104.4	10,835	37.0	0.1	92.7
	Total	31,650,853	100.0	100.0	101.4	18,744,092	59.2	100.0	102.2	12,906,761	40.8	100.0	100.1
2008	Wood pulp	11,777,567	100.0	38.0	96.7	10,878,355	92.4	59.4	97.1	899,212	7.6	7.1	92.5
	Market Pulp(DIP)	132,508	100.0	0.4	100.4	117,688	88.8	0.6	101.3	14,820	11.2	0.1	93.8
	recovered paper	19,012,907	100.0	61.4	98.4	7,307,439	38.4	39.9	98.7	11,705,468	61.6	92.7	98.3
	Other stocks	31,455	100.0	0.1	107.3	21,128	67.2	0.1	114.4	10,327	32.8	0.1	95.3
	Total	30,954,437	100.0	100.0	97.8	18,324,610	59.2	100.0	97.8	12,629,827	40.8	100.0	97.9
2009	Wood pulp	9,855,407	100.0	36.8	83.7	9,059,086	91.9	57.7	83.3	796,321	8.1	7.2	88.6
	Market Pulp(DIP)	123,158	100.0	0.5	92.9	110,294	89.6	0.7	93.7	12,864	10.4	0.1	86.8
	recovered paper	16,791,964	100.0	62.7	88.3	6,501,116	38.7	41.4	89.0	10,290,848	61.3	92.6	87.9
	Other stocks	26,605	100.0	0.1	84.6	18,608	69.9	0.1	88.1	7,997	30.1	0.1	77.4
	Total	26,797,134	100.0	100.0	86.6	15,689,104	58.5	100.0	85.6	11,108,030	41.5	100.0	88.0
2010	Wood pulp	10,407,274	100.0	37.4	105.6	9,568,876	91.9	59.4	105.6	838,398	8.1	7.1	105.3
	Market Pulp(DIP)	119,667	100.0	0.4	97.2	106,587	89.1	0.7	96.6	13,080	10.9	0.1	101.7
	recovered paper	17,292,214	100.0	62.1	103.0	6,412,367	37.1	39.8	98.6	10,879,847	62.9	92.7	105.7
	Other stocks	31,079	100.0	0.1	116.8	22,680	73.0	0.1	121.9	8,399	27.0	0.1	105.0
	Total	27,850,234	100.0	100.0	103.9	16,110,510	57.8	100.0	102.7	11,739,724	42.2	100.0	105.7

# Table 10 Exports of recovered paper classified by countries

Export No.1

( METRIC TON, FOB 1,000yen, % )

Grades	Unbleached Kraft paper or paperboard of corrugated paper or paperboard																	
	China		Taiwan		Korea		Thailand		Vietnam		Philippines		India		Hong Kong		Total	
Countries	Quan.	Val.	Quan.	Val.	Quan.	Val.	Quan.	Val.	Quan.	Val.	Quan.	Val.	Quan.	Val.	Quan.	Val.	Quan.	Val.
Year, Mon.																		
2009 total	1,968,028	25,650,391	96,972	1,157,092	3,354	52,907	318,668	3,698,831	63,218	774,165			222	2,553			2,450,660	31,338,535
Ratio of the year before	157.4	101.8	134.1	71.0	7.5	5.1	155.5	81.5	269.9	150.0			-	-			153.3	95.0
Proportion	40.0	39.8	2.0	1.8	0.1	0.1	6.5	5.7	1.3	1.2					0.0	0.0	49.9	48.6
2010 Jan.	153,795	2,475,296	20,872	325,654	1,027	15,326	20,475	302,779	4,562	73,573							200,731	3,192,628
Feb.	112,906	1,861,474	22,038	374,659	544	9,705	28,730	483,777	4,756	81,412							168,974	2,811,027
Mar.	185,696	3,259,313	8,839	147,681	2,256	46,014	37,971	690,300	10,073	184,610							244,835	4,327,918
Apr.	152,387	2,734,956	4,803	93,739	435	9,321	45,191	901,717	10,656	206,597			45	680			213,517	3,947,010
May	118,413	2,114,728	2,042	36,898	3,896	77,445	37,392	706,460	10,003	193,027			70	1,574			171,816	3,130,132
Jun.	114,086	1,985,839	3,169	42,789	5,105	100,732	45,272	816,739	6,952	126,171			21	408			174,605	3,072,678
Jul.	119,989	2,039,127	6,154	101,606	2,446	45,582	23,771	419,698	1,534	24,647							153,894	2,630,660
Aug.	131,384	2,226,792	7,393	130,642	689	13,298	20,627	369,577	6,823	114,190	205	5,408	69	1,056			167,190	2,860,963
Sep.	130,645	2,159,891	6,050	103,459			24,304	433,874	4,497	80,508	306	5,450					165,802	2,783,182
Oct.	146,733	2,402,831	7,225	120,078	39	1,386	31,549	562,647	5,534	97,253							191,080	3,184,195
Nov.	123,027	2,046,600	4,242	72,437	37	1,319	39,507	724,165	4,077	72,214					21	366	170,911	2,917,101
Dec.	133,742	2,318,813	9,759	179,688			38,881	735,424	8,322	146,742							190,704	3,380,667
2010 total	1,622,803	27,625,660	102,586	1,729,330	16,474	320,128	393,670	7,147,157	77,789	1,400,944	511	10,858	205	3,718	21	366	2,214,059	38,238,161
Ratio of the year before	82.5	107.7	105.8	149.5	491.2	605.1	123.5	193.2	123.0	181.0	-	-	92.3	145.6	-	-	90.3	122.0
Proportion	37.1	36.1	2.3	2.3	0.4	0.4	9.0	9.3	1.8	1.8	0.0	0.0	0.0	0.0	0.0	0.0	50.6	49.9

Grades	Other paper or paperboard made mainly of bleached chemical pulp, not colored in the mass																			
	China		Taiwan		Philippines		Korea		Vietnam		Thailand		Indonesia		India		Hong Kong		Total	
Countries	Quan.	Val.	Quan.	Val.	Quan.	Val.	Quan.	Val.	Quan.	Val.	Quan.	Val.	Quan.	Val.	Quan.	Val.	Quan.	Val.	Quan.	Val.
Year, Mon.																				
2009 total	73,798	955,780	6,219	86,715	5,569	92,602	12,808	218,638	22,542	339,698	537	12,361	2,142	41,642	2,147	40,232	20	572	125,870	1,789,114
Ratio of the year before	111.0	63.8	93.0	46.4	206.4	91.2	208.7	114.4	67.5	38.7	43.9	31.6	-	-	-	-	-	-	107.9	61.8
Proportion	1.5	1.5	0.1	0.1	0.1	0.1	0.3	0.3	0.5	0.5	0.0	0.0							2.6	2.8
2010 Jan.	4,969	80,219	392	8,153	254	4,940	492	10,147	1,211	17,242	58	2,220			92	2,050			7,468	124,971
Feb.	3,263	59,943	704	19,204	981	22,534	847	26,153	467	7,965	71	1,332							6,333	137,131
Mar.	7,218	148,997	572	12,699	1,613	41,673	442	16,583	375	6,422	116	4,356			185	4,865			10,521	235,595
Apr.	8,285	188,685	591	14,020	2,048	62,810	470	20,973	997	23,798			101	3,511	91	2,695	44	1,431	12,627	317,923
May	9,087	192,244	91	2,256	883	28,894	530	12,593	1,048	24,377	205	5,085	92	2,584	49	1,344			11,985	269,377
Jun.	5,709	123,391	293	6,993	683	21,468	196	4,939	102	3,985	40	1,824			49	1,355	23	735	7,095	164,690
Jul.	5,233	99,781	175	3,944	1,107	29,731	97	2,399	190	4,548	250	6,307	51	1,438	137	3,687	22	671	7,262	152,506
Aug.	5,061	96,293	301	6,431	90	2,289	474	12,157	1,468	35,761	280	7,936					25	750	7,699	161,617
Sep.	5,736	101,416	797	14,715	41	893	389	9,089	680	17,095	159	5,493							7,802	148,701
Oct.	6,925	124,700	203	5,124	408	11,121	293	7,022	2,186	48,118	226	7,739							10,241	203,824
Nov.	6,388	122,647	209	4,654	527	14,692	218	4,627	620	12,894	344	8,328	207	5,232	101	2,279			8,614	175,353
Dec.	7,348	148,129	282	6,954	896	24,464	296	7,049	1,325	29,378	855	18,490							11,002	234,464
2010 total	75,222	1,486,445	4,610	105,147	9,531	265,509	4,744	133,731	10,669	231,583	2,604	69,110	451	12,765	704	18,275	114	3,587	108,649	2,326,152
Ratio of the year before	101.9	155.5	74.1	121.3	171.1	286.7	37.0	61.2	47.3	68.2	484.9	559.1	21.1	30.7	32.8	45.4	570.0	627.1	86.3	130.0
Proportion	1.7	1.9	0.1	0.1	0.2	0.3	0.1	0.2	0.2	0.3	0.1	0.1	0.0	0.0	0.0	0.0	0.0	0.0	2.5	3.0

Export No.2

Grades	Old news															
	China		Korea		Indonesia		Philippines		Thailand		Taiwan		Vietnam		Total	
Year, Mon.	Quan.	Val.	Quan.	Val.	Quan.	Val.	Quan.	Val.	Quan.	Val.	Quan.	Val.	Quan.	Val.	Quan.	Val.
2009 total	515,704	6,916,278	33,888	467,535	12,438	173,326	12,662	165,701	10,364	139,137	2,787	34,882	413	5,658	588,256	7,902,967
Ratio of the year before	179.5	99.6	91.9	45.2	226.4	114.2	700.7	324.5	152.7	98.0	445.9	204.5	960.5	526.8	173.6	94.7
Proportion	10.5	10.7	0.7	0.7	0.3	0.3	0.3	0.3	0.2	0.2	0.1	0.1	0.0	0.0	12.0	12.3
2010 Jan.	40,440	714,226	2,988	53,682			547	9,845	1,759	33,338	206	4,161	104	1,716	46,044	816,968
Feb.	33,385	586,326	1,895	34,707	896	13,743	930	15,728	900	17,324	1,172	21,223			39,178	689,051
Mar.	38,977	718,360	2,413	45,102	966	15,633	713	11,446	993	16,853	573	9,725			44,635	817,119
Apr.	40,589	767,030	1,269	25,242	1,051	23,718	342	8,502	2,316	48,972	299	6,356	490	10,922	46,356	890,742
May	31,749	574,579	4,406	91,421	1,982	42,119	2,192	47,850	1,942	39,596			1,830	40,858	44,101	836,423
Jun.	21,053	359,514	3,433	67,327	3,239	66,566	3,369	67,598	1,339	25,930	297	4,834	1,494	32,057	34,224	623,826
Jul.	14,465	255,492	2,151	40,423	926	21,087	1,260	23,210	2,650	50,442	320	5,068	1,010	19,689	22,782	415,411
Aug.	17,934	313,940	1,997	36,856	238	4,330	2,401	42,237	3,887	74,930	294	4,542	1,023	19,717	27,774	496,552
Sep.	16,930	293,645	2,335	42,713	1,482	27,183	361	7,248	1,666	31,390			237	4,102	23,011	406,281
Oct.	25,052	439,488	2,938	54,883	1,041	19,214	1,103	18,718	465	8,998			152	2,926	30,751	544,227
Nov.	26,742	473,249	4,920	86,681	573	10,812	1,224	22,855	1,576	29,835			236	4,355	35,271	627,787
Dec.	34,139	633,042	11,603	231,408			205	4,448	314	6,100			718	14,887	46,979	889,885
2010 total	341,455	6,128,891	42,348	810,445	12,394	244,405	14,647	279,685	19,807	383,708	3,161	55,909	7294	151,229	441,106	8,054,272
Ratio of the year before	66.2	88.6	125.0	173.3	99.6	141.0	115.7	168.8	191.1	275.8	113.4	160.3	960.5	526.8	75.0	101.9
Proportion	7.8	8.0	1.0	1.1	0.3	0.3	0.3	0.4	0.5	0.5	0.1	0.1	0.2	3.5	10.1	10.5

Grades	Other paper or paperboard made mainly of bleached mechanical pulp																							
	Korea		Taiwan		China		Philippines		Thailand		Vietnam		Hong Kong		India		USA		Indonesia		Malaysia		Total	
Year, Mon.	Quan.	Val.	Quan.	Val.	Quan.	Val.	Quan.	Val.	Quan.	Val.	Quan.	Val.	Quan.	Val.	Quan.	Val.	Quan.	Val.	Quan.	Val.	Quan.	Val.	Quan.	Val.
2009 total	10,324	170,910	7,342	86,408	1,085,589	13,848,169	1,748	35,774	5,426	66,692	13,578	221,345	151	3,790	860	14,831	1	271	435	6,722			1,125,454	14,454,912
Ratio of the year before	47.2	30.9	58.3	28.9	123.7	72.4	57.0	34.5	61.2	32.4	296.1	159.0	7.7	15.8	1,283.6	556.3	-	-	-	-			120.9	70.7
Proportion	0.2	0.3	0.1	0.1	22.1	21.5	0.0	0.1	0.1	0.1	0.3	0.3	0.0	0.0	0.0	0.0							22.9	22.4
2010 Jan.	267	5,174			77,222	1,271,912			743	11,398	1,272	22,685			128	3,106	2	365					79,634	1,314,640
Feb.	147	3,196	802	13,910	69,690	1,178,814	692	13,259			1,872	32,997	113	1,831	232	4,437	1	278					73,549	1,248,722
Mar.	907	23,276	388	8,358	101,569	1,790,936	893	20,756	23	414	2,847	53,616	42	1,220					501	7,846			107,170	1,906,422
Apr.	1,720	42,250	979	20,288	111,736	2,076,483	19	386	549	9,757	1,616	26,027	90	814	229	5,175			98	1,988			117,036	2,183,168
May	810	19,351	237	4,218	111,061	1,997,224			906	14,956	2,176	37,619	50	446	129	2,738			2,681	55,583			118,050	2,132,135
Jun.	1,215	28,954			90,104	1,512,061	774	18,755	224	4,365	1,282	24,261	143	2,167	23	360			1,837	37,525	418	6,901	96,020	1,635,349
Jul.	993	24,679	39	1,306	65,314	1,024,847	358	8,989	65	1,689	934	18,806	119	1,866	157	3,415			729	12,264	1,835	30,701	70,543	1,128,562
Aug.	1,295	31,559	642	7,851	70,396	1,107,214			47	922	1,548	27,414	117	1,751	82	1,994			121	1,656	839	14,928	75,087	1,195,289
Sep.	1,394	34,985	534	7,786	68,424	1,076,564			111	2,169	614	14,501			148	3,192			2,331	40,565	287	4,942	73,843	1,184,704
Oct.	1,068	25,415	692	13,410	73,356	1,168,152	1,242	24,799	224	6,516	1,392	28,279	26	215	54	1,288			2,497	43,548	628	11,641	81,179	1,323,263
Nov.	633	11,689	687	11,533	75,975	1,230,701	742	18,721	420	7,059	462	9,984			86	1,857			2,821	52,656	198	3,564	82,024	1,347,764
Dec.	917	21,179	325	5,974	77,641	1,341,700	199	4,960	192	3,469	1,176	26,114	122	2,017	60	1,525			3,121	59,665			83,753	1,466,603
2010 total	11,366	271,707	5,325	94,634	992,488	16,776,608	4,919	110,625	3,504	62,714	17,191	322,303	822	12,327	1,328	29,087	3	643	16,737	313,296	4,205	72,677	1,057,888	18,066,621
Ratio of the year before	110.1	159.0	72.5	109.5	91.4	121.1	281.4	309.2	64.6	94.0	126.6	145.6	544.4	325.3	154.4	196.1	300.0	237.3	3847.6	4660.8	-	-	94.0	125.0
Proportion	0.3	0.4	0.1	0.1	22.7	21.9	0.1	0.1	0.1	0.1	0.4	0.4	0.0	0.0	0.0	0.0	0.0	0.0	0.4	0.4	0.1	0.1	24.2	23.6

Export No.3

Grades	Other, including unsorted waste and scrap																				Total					
	Taiwan		Korea		Philippines		China		Thailand		Veitnam		Hong Kong		Hong Kong		Hong Kong		Hong Kong				Total			
Countries	Quan.	Val.	Quan.	Val.	Quan.	Val.	Quan.	Val.	Quan.	Val.	Quan.	Val.	Quan.	Val.	Quan.	Val.	Quan.	Val.	Quan.	Val.	Quan.	Val.	Quan.	Val.		
2009 total	9,850	129,910	25,422	406,599	2,858	43,612	547,935	7,865,858	26,519	346,925	8,211	166,843	3,088	26,346									623,883	8,986,093	4,914,123	64,471,621
Ratio of the year before	130.6	79.7	125.7	68.3	228.5	96.3	123.7	82.3	166.7	101.7	144.4	72.7	40.1	32.6									123.4	80.6	140.8	85.0
Proportion	0.2	0.2	0.5	0.6	0.1	0.1	11.2	12.2	0.5	0.5	0.2	0.3	0.1	0.0	0.0	0.0	0.0	0.0	0.0	0.0	0.0	12.7	13.9	100.0	100.0	
2010 Jan.	1,528	24,218	4,418	87,853	403	7,383	47,715	807,945	1,066	16,182	192	7,346	141	1,089									55,463	952,016	389,340	6,401,223
Feb.	1,648	28,684	2,279	50,931	547	11,009	36,334	610,035	1,615	29,907	498	13,912	356	4,381									43,277	748,859	331,311	5,634,790
Mar.	1,460	25,693	2,070	44,232	443	9,631	51,663	912,822	3,410	66,023	1,602	35,935	274	4,043	65	945							60,987	1,099,324	468,148	8,386,378
Apr.	1,444	34,639	2,587	58,407	1,723	43,562	55,331	1,018,917	2,554	54,131	2,920	66,366	275	2,318									66,834	1,278,340	456,370	8,617,183
May	1,262	31,473	1,729	42,112	102	3,129	42,311	774,127	2,961	60,855	2,589	62,433	239	3,462									51,193	977,591	397,145	7,345,658
Jun.	565	16,171	2,846	65,798	213	8,564	32,251	553,913	2,134	42,012	4,181	92,460	259	3,627			228	4,872					42,677	787,417	354,621	6,283,960
Jul.	1,120	27,388	3,275	71,737	19	804	33,480	540,503	1,443	29,073	3,790	86,698	263	4,536					529	8,935			43,919	769,674	298,400	5,096,813
Aug.	739	22,058	1,136	26,033	82	3,258	34,498	561,026	912	20,118	2,932	66,032	410	5,338	60	1,553							40,769	705,416	318,519	5,419,837
Sep.	888	17,895	2,082	42,490			28,732	465,349	1,123	21,689	2,500	53,095	72	650									35,397	601,168	305,855	5,124,036
Oct.	359	4,831	936	21,135	464	11,298	30,897	510,350	1,266	26,138	2,425	55,962	197	1,638			871	16,077					37,415	647,429	350,666	5,902,938
Nov.	465	11,056	1,170	27,008	107	2,598	28,565	487,728	1,092	21,233	1,242	29,283	125	959					711	13,377			33,477	593,242	330,297	5,661,247
Dec.	804	16,604	817	20,736			35,626	647,271	572	11,820	2,151	51,488	357	2,096					141	2,623			40,468	752,638	372,906	6,724,257
2010 total	12,282	260,710	25,345	558,472	4,103	101,236	457,403	7,889,986	20,148	399,181	27,022	621,010	2,968	34,137	125	2,498	1,951	36,949	529	8,935			551,876	9,913,114	4,373,578	76,598,320
Ratio of the year before	124.7	200.7	99.7	137.4	143.6	232.1	83.5	100.3	76.0	115.1	329.1	372.2	96.1	129.6	—	—	—	—	—	—			88.5	110.3	89.0	118.8
Proportion	0.3	0.3	0.6	0.7	0.1	0.1	10.5	10.3	0.5	0.5	0.6	0.8	0.1	0.0	0.0	0.0	0.0	0.0	0.0	0.0			12.6	12.9	100.0	100.0

**Table 9 Consumption rate index per ton of fiber for paper production**

( METRIC TON, % )

Year	Item For	Consumption of	Paper & Paperboard	Consumotion
		fiber stock (A)	production (B)	rate index (A)/(B)
1998	Paper	16,958,235 ( 98.1)	17,855,216 ( 97.7)	0.9498
	Paperboard	12,803,083 ( 94.6)	12,030,634 ( 94.4)	1.0642
	Total	29,761,318 ( 96.6)	29,885,850 ( 96.4)	0.9958
1999	Paper	17,229,324 (101.6)	18,393,621 (103.0)	0.9367
	Paperboard	13,165,096 (102.8)	12,237,752 (101.7)	1.0758
	Total	30,394,420 (102.1)	30,631,373 (102.5)	0.9923
2000	Paper	17,891,967 (103.8)	19,036,765 (103.5)	0.9399
	Paperboard	13,756,344 (104.5)	12,791,293 (104.5)	1.0754
	Total	31,648,311 (104.1)	31,828,058 (103.9)	0.9944
2001	Paper	17,666,864 ( 98.7)	18,384,941 ( 96.6)	0.9609
	Paperboard	13,242,788 ( 96.3)	12,332,251 ( 96.4)	1.0738
	Total	30,909,652 ( 97.7)	30,717,192 ( 96.5)	1.0063
2002	Paper	17,644,033 ( 99.9)	18,527,880 (100.8)	0.9523
	Paperboard	13,107,668 ( 99.0)	12,157,965 ( 98.6)	1.0781
	Total	30,751,701 ( 99.5)	30,685,845 ( 99.9)	1.0021
2003	Paper	17,565,160 ( 99.6)	18,396,362 ( 99.3)	0.9548
	Paperboard	12,994,895 ( 99.1)	12,060,516 ( 99.2)	1.0775
	Total	30,560,055 ( 99.4)	30,456,878 ( 99.3)	1.0034
2004	Paper	17,948,930 (102.2)	18,788,241 (102.1)	0.9553
	Paperboard	13,007,905 (100.1)	12,103,373 (100.4)	1.0747
	Total	30,956,835 (101.3)	30,891,614 (101.4)	1.0021
2005	Paper	18,163,689 (101.2)	18,901,072 (100.6)	0.9610
	Paperboard	12,893,043 ( 99.1)	12,051,254 ( 99.6)	1.0699
	Total	31,056,732 (100.3)	30,952,326 (100.2)	1.0034
2006	Paper	18,337,089 (101.0)	19,065,678 (100.9)	0.9618
	Paperboard	12,887,922 (100.0)	12,041,940 ( 99.9)	1.0703
	Total	31,225,011 (100.5)	31,107,618 (100.5)	1.0038
2007	Paper	18,744,092 (102.2)	19,192,208 (100.7)	0.9767
	Paperboard	12,906,761 (100.1)	12,073,546 (100.3)	1.0690
	Total	31,650,853 (101.4)	31,265,754 (100.5)	1.0123
2008	Paper	18,324,610 ( 97.8)	18,827,707 ( 98.1)	0.9733
	Paperboard	12,629,827 ( 97.9)	11,799,748 ( 97.7)	1.0703
	Total	30,954,437 ( 97.8)	30,627,455 ( 98.0)	1.0107
2009	Paper	15,689,104 ( 85.6)	15,831,919 ( 84.1)	0.9910
	Paperboard	11,108,030 ( 88.0)	10,436,033 ( 88.4)	1.0644
	Total	26,797,134 ( 86.6)	26,267,952 ( 85.8)	1.0201
2010	Paper	16,110,510 (102.7)	16,386,761 (103.5)	0.9831
	Paperboard	11,739,724 (105.7)	10,976,567 (105.2)	1.0695
	Total	27,850,234 (103.9)	27,363,328 (104.2)	1.0178

Atn. ( ):Ratio of the year before

**Table 11 Imports of recovered paper classified by countries**

Import No.1

( METRIC TON, CIF 1,000yen, % )

Grades	Corrugated containers						Unbleached kraft paper and paperboard			
	USA		New Zealand		Total		USA		Total	
Countries	Quan.	Val.	Quan.	Val.	Quan.	Val.	Quan.	Val.	Quan.	Val.
Year, Mon.										
2008 total	30,146	585,184			30,146	585,184	742	16,657	742	16,657
Ratio of the year before	83.7	53.2			83.4	53.1	65.8	45.8	65.8	45.8
Proportion	68.6	56.8	0.0	0.0	68.6	56.8	1.7	1.6	1.7	1.6
2009 Jan.	2,377	52,253			2,377	52,253	42	989	42	989
Feb.	2,737	64,866			2,737	64,866	43	1,134	43	1,134
Mar.	2,517	66,071			2,517	66,071	112	4,053	112	4,053
Apr.	2,518	75,971			2,518	75,971	42	1,418	42	1,418
May	3,216	96,652			3,216	96,652	42	1,326	42	1,326
Jun.	2,514	72,537			2,514	72,537	43	1,321	43	1,321
Jul.	2,193	60,862			2,193	60,862	41	1,140	41	1,140
Aug.	2,356	64,177			2,356	64,177	66	2,448	66	2,448
Sep.	2,163	58,109	26	554	2,189	58,663	25	1,329	25	1,329
Oct.	2,013	56,191			2,013	56,191	84	2,394	84	2,394
Nov.	2,737	76,962	24	550	2,761	77,512	65	2,365	65	2,365
Dec.	2,015	60,609			2,015	60,609	69	2,533	69	2,533
2009 total	29,356	805,260	50	1,104	29,406	806,364	674	22,450	674	22,450
Ratio of the year before	97.4	137.6	—	—	97.5	137.8	90.8	134.8	90.8	134.8
Proportion	66.9	56.5	0.1	0.1	67.0	56.6	1.5	1.6	1.5	1.6

Grades	Other paper or paperboard made mainly of bleached chemical pulp,						Old news				Paper or paperboard made mainly of mechanical pulp			
	USA		Canada		Total		Italy		Total		USA		Total	
Countries	Quan.	Val.	Quan.	Val.	Quan.	Val.	Quan.	Val.	Quan.	Val.	Quan.	Val.	Quan.	Val.
Year, Mon.														
2008 total	11,587	380,277			11,587	370,277	17	998	286	7,274				
Ratio of the year before	90.4	57.1			82.8	50.5	-	-	4.6	3.9				
Proportion	26.4	36.9	0.0	0.0	26.4	36.0			0.7	0.7				
2009 Jan.	595	23,506			595	23,506				0				
Feb.	1,406	55,936			1,406	55,936	5	236	5	236				
Mar.	919	38,428			919	38,428								
Apr.	629	25,453			629	25,453								
May	1,169	52,462			1,169	52,462								
Jun.	1,887	83,940			1,887	83,940								
Jul.	884	40,076			884	40,076								
Aug.	1,020	46,414			1,020	46,414					78	2,115	78	2,115
Sep.	1,011	46,558			1,011	46,558								
Oct.	450	20,669	24	1,603	474	22,272								
Nov.	910	37,244			910	37,244								
Dec.	1,372	55,782	25	1,585	1,397	57,367					55	1,643	55	1,643
2009 total	12,252	526,468	49	3,188	12,301	529,656	5	236	5	236	133	3,758	133	3,758
Ratio of the year before	105.7	138.4	—	—	106.2	143.0	—	—	1.7	3.2	—	—	—	—
Proportion	27.9	37.0	0.1	0.2	28.0	37.2	0.0	0.0	0.0	0.0	0.3	0.3	0.3	0.3

Attn. as to the import data by grade in 2007, it contains data of the other countries.

Import No.2

( METRIC TON, CIF 1,000yen, % )

Grades	Other, including unsorted waste and scrap												Total	
	USA		China		Malaysia		Korea		Netherlands		Total		Quan.	Val.
Countries	Quan.	Val.	Quan.	Val.	Quan.	Val.	Quan.	Val.	Quan.	Val.	Quan.	Val.	Quan.	Val.
2008 total	1085	29,108	56	4,530	32	6,439	24	399			1,197	40,476	43,958	1,029,868
Ratio of the year before	61.6	55.5	175.0	168.9	60.4	57.7	-	-			64.8	61.1	71.5	46.8
Proportion	2.5	2.8	0.1	0.4	0.1	0.6	0.1	0.0			2.7	3.9	100.0	100.0
2009 Jan.	61	1,831	8	659	3	707					72	3,197	3,086	79,945
Feb.	487	18,212			2	794					489	19,006	4,680	141,178
Mar.	42	2,470	8	650							50	3,120	3,598	111,672
Apr.	101	3,418	4	308	4	1,383					109	5,109	3,298	107,951
May	19	703	8	668	3	1,347					30	2,718	4,457	153,158
Jun.	100	3,554									100	3,554	4,544	161,352
Jul.			8	637	2	733					10	1,370	3,128	103,448
Aug.	98	3,263			1	407	7	3,077			106	6,747	3,626	121,901
Sep.	57	1,783			15	963					72	2,746	3,297	109,296
Oct.	84	2,972	16	1,225	19	1,801					119	5,998	2,690	86,855
Nov.	80	2,501	4	269	11	1,807					95	4,577	3,831	121,698
Dec.	59	2,029	8	614	8	815			24	587	99	4,045	3,635	126,197
2009 total	1,188	42,736	64	5,030	68	10,757	7	3,077	24	587	1,351	62,187	43,870	1,424,651
Ratio of the year before	109.5	146.8	114.3	111.0	212.5	167.1	29.2	771.2	-	-	112.9	153.6	99.8	138.3
Proportion	2.7	3.0	0.1	0.4	0.2	0.8	0.0	0.2	0.1	0.0	3.1	4.4	100.0	100.0

**Table 12 Trends in imports of paper & paperboard**

( Kg, CIF, 1,000yen )

Grades	Year	2010		2009		Ratio of the year before (%)	
		Quant.	Val.	Quant.	Val.	Quant.	Val.
Newsprint (of a width exceeding 161cm)		42,790,000	2,773,313	41,527,000	2,817,128	103.0	98.4
Newsprint (other)		95,385,000	6,816,157	96,075,000	7,141,855	99.3	95.4
Printing paper (fine)		29,882,867	3,391,518	34,182,847	3,670,956	87.4	92.4
Printing paper (copy paper)		426,932,391	41,317,532	416,663,227	42,212,075	102.5	97.9
Printing paper (thin paper)		180,589	39,525	377,939	85,468	47.8	46.2
Printing paper (other)		79,068,351	6,260,369	63,549,708	5,640,339	124.4	111.0
Coated paper		276,513,355	23,385,359	314,599,556	26,066,860	87.9	89.7
Coated wood contained paper		407,302,895	32,411,202	423,172,127	35,864,163	96.2	90.4
Sack kraft paper (unbleached)		2,176,311	184,021	2,709,742	220,528	80.3	83.4
Sack kraft paper (bleached)		1,342,525	126,227	1,148,107	110,420	116.9	114.3
Other kraft paper (unbleached)		9,016,144	1,063,356	7,586,852	816,613	118.8	130.2
Other kraft paper (bleached)		1,326,482	176,663	1,128,988	146,051	117.5	121.0
Tracing paper		330,809	153,255	396,025	188,220	83.5	81.4
Parchment paper, grease proof paper		4,527,413	988,765	6,575,858	1,381,193	68.8	71.6
Other paper		19,634,784	5,352,698	20,220,360	5,577,819	97.1	96.0
<b>Paper Total</b>		<b>1,396,409,916</b>	<b>124,439,960</b>	<b>1,429,913,336</b>	<b>131,939,688</b>	<b>97.7</b>	<b>94.3</b>
Kraftliner (unbleached)		62,813,167	3,716,237	43,399,291	2,521,137	144.7	147.4
Kraftliner (bleached)		3,962,544	296,635	2,943,237	224,364	134.6	132.2
Test liner		20,267,991	906,029	20,671,362	859,366	98.0	105.4
Fluting paper (SCP)		356,439	17,915	361,115	15,129	98.7	118.4
Fluting paper (other)		46,693,569	1,682,662	67,053,813	2,262,817	69.6	74.4
Coated white paperboard (CP95%)		62,548,306	6,631,105	51,138,552	5,521,129	122.3	120.1
Coated white paperboard (other)		128,997,803	10,059,903	126,771,256	9,999,266	101.8	100.6
Uncoated white paperboard (CP95%)		15,747,285	1,658,577	19,436,752	2,196,727	81.0	75.5
Uncoated white paperboard (other)		11,915,907	1,162,156	12,329,517	1,197,587	96.6	97.0
Kraft paperboard		23,685,921	1,636,884	12,355,753	915,284	191.7	178.8
Other paperboards		18,029,910	1,656,849	14,910,069	1,417,790	120.9	116.9
<b>Paperboard Total</b>		<b>395,018,842</b>	<b>29,424,952</b>	<b>371,370,717</b>	<b>27,130,596</b>	<b>106.4</b>	<b>108.5</b>
<b>Paper and Paperboard Total</b>		<b>1,791,428,758</b>	<b>153,864,912</b>	<b>1,801,284,053</b>	<b>159,070,284</b>	<b>99.5</b>	<b>96.7</b>
Hand made paper and paperboard		1,618,833	1,553,561	1,544,951	1,534,750	104.8	101.2
Paper for milk carton		219,944,817	28,355,164	206,919,894	29,250,958	106.3	96.9
Other converted paper total		86,172,841	22,749,267	79,672,370	20,345,661	108.2	111.8
<b>All Kind of Paper Total</b>		<b>2,099,165,249</b>	<b>206,522,904</b>	<b>2,089,421,268</b>	<b>210,201,653</b>	<b>100.5</b>	<b>98.2</b>

**Table 13 Trends in exports of paper & paperboard**

( Kg, FOB, 1,000yen

Grades	Year	2010		2009		Ratio of the year before (%)	
		Quant.	Val.	Quant.	Val.	Quant.	Val.
Newspaper		57,542,000	2,688,906	114,423,000	5,641,412	50.3	47.7
Printing paper (fine)		143,099,614	12,644,515	111,586,949	9,759,475	128.2	129.6
Printing paper (colored)		21,155,061	2,539,855	17,718,496	2,076,357	119.4	122.3
Printing paper (thin paper)		15,094,641	1,771,462	12,651,101	1,443,237	119.3	122.7
Printing paper (other)		10,758,144	1,187,099	9,439,009	931,863	114.0	127.4
Other graphic purposes		29,021,743	3,642,331	41,056,422	4,376,201	70.7	83.2
Coated paper		469,464,362	36,315,172	264,501,641	23,294,829	177.5	155.9
Coated wood contained paper		396,319,705	28,141,648	268,216,143	20,220,100	147.8	139.2
Sack kraft paper		30,566,536	2,062,957	9,708,773	644,653	314.8	320.0
Other kraft paper		108,937,290	14,420,625	87,456,394	11,463,708	124.6	125.8
Sulphite wrapping paper		6,542	5,645	24,061	6,540	27.2	86.3
Cigarette paper		1,730,049	715,180	1,628,830	663,907	106.2	107.7
Glassine paper		3,887,120	958,838	2,916,781	614,417	133.3	156.1
Tracing paper		31,807	24,190	30,981	25,434	102.7	95.1
Parchment paper, grease proof paper		1,360,331	458,373	1,001,786	313,932	135.8	146.0
Other paper		56,878,524	15,166,036	49,305,231	11,992,747	115.4	126.5
<b>Paper Total</b>		<b>1,345,853,469</b>	<b>122,742,832</b>	<b>991,665,598</b>	<b>93,468,812</b>	<b>135.7</b>	<b>131.3</b>
Kraft liner		10,192,000	816,358	14,735,000	972,938	69.2	83.9
Test liner		45,252,428	2,197,470	9,843,292	568,246	459.7	386.7
Fluting paper (SCP)		418,000	20,181	638,000	35,256	65.5	57.2
Fluting paper (other)		14,409,227	548,209	2,065,913	88,674	697.5	618.2
Coated white paperboard (CP95%)		2,955,469	339,960	733,039	76,491	403.2	444.4
Coated white paperboard (other)		17,583,835	1,890,667	15,855,432	1,480,195	110.9	127.7
Uncoated white paperboard (CP95%)		338,348	24,121	355,904	27,736	95.1	87.0
Uncoated white paperboard (other)		339,846	63,190	281,728	43,910	120.6	143.9
Kraft paperboard (unbleached)		3,032,421	467,568	3,368,166	501,438	90.0	93.2
Color paperboard		136,656	40,438	275,676	56,188	49.6	72.0
Other paperboards		20,816,156	5,017,505	17,362,838	4,246,393	119.9	118.2
<b>Paperboard Total</b>		<b>115,474,386</b>	<b>11,425,667</b>	<b>65,514,988</b>	<b>8,097,465</b>	<b>176.3</b>	<b>141.1</b>
<b>Paper and Paperboard Total</b>		<b>1,461,327,855</b>	<b>134,168,499</b>	<b>1,057,180,586</b>	<b>101,566,277</b>	<b>138.2</b>	<b>132.1</b>
Hand made paper and paperboard		175,779	256,523	156,551	224,277	112.3	114.4
Self-copy paper		5,615,545	937,756	5,859,635	1,000,889	95.8	93.7
Thermal transfer paper		637,211	441,751	471,384	516,998	135.2	85.4
Cellophane		6,504,793	2,831,244	5,415,964	2,361,388	120.1	119.9
Converted paper total		249,865,193	85,883,563	199,979,390	71,637,582	124.9	119.9
<b>All Kind of Paper Total</b>		<b>1,724,126,376</b>	<b>224,519,336</b>	<b>1,269,063,510</b>	<b>177,307,411</b>	<b>135.9</b>	<b>126.6</b>

**Table 12 Trends in imports of paper & paperboard**

( Kg, CIF, 1,000yen )

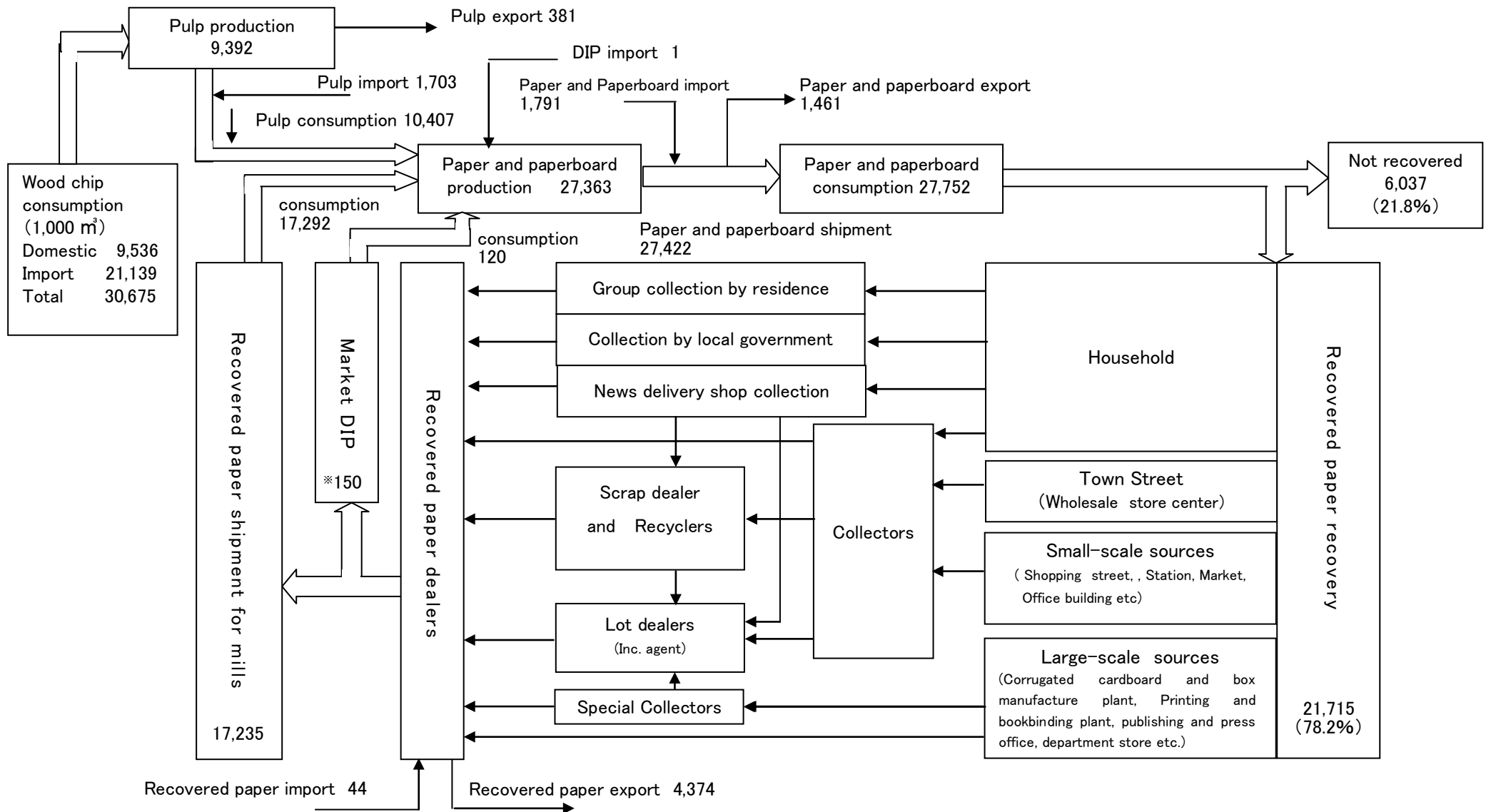
Grades	Year	2010		2009		Ratio of the year before (%)	
		Quant.	Val.	Quant.	Val.	Quant.	Val.
Newsprint (of a width exceeding 161cm)		42,790,000	2,773,313	41,527,000	2,817,128	103.0	98.4
Newsprint (other)		95,385,000	6,816,157	96,075,000	7,141,855	99.3	95.4
Printing paper (fine)		29,882,867	3,391,518	34,182,847	3,670,956	87.4	92.4
Printing paper (copy paper)		426,932,391	41,317,532	416,663,227	42,212,075	102.5	97.9
Printing paper (thin paper)		180,589	39,525	377,939	85,468	47.8	46.2
Printing paper (other)		79,068,351	6,260,369	63,549,708	5,640,339	124.4	111.0
Coated paper		276,513,355	23,385,359	314,599,556	26,066,860	87.9	89.7
Coated wood contained paper		407,302,895	32,411,202	423,172,127	35,864,163	96.2	90.4
Sack kraft paper (unbleached)		2,176,311	184,021	2,709,742	220,528	80.3	83.4
Sack kraft paper (bleached)		1,342,525	126,227	1,148,107	110,420	116.9	114.3
Other kraft paper (unbleached)		9,016,144	1,063,356	7,586,852	816,613	118.8	130.2
Other kraft paper (bleached)		1,326,482	176,663	1,128,988	146,051	117.5	121.0
Tracing paper		330,809	153,255	396,025	188,220	83.5	81.4
Parchment paper, grease proof paper		4,527,413	988,765	6,575,858	1,381,193	68.8	71.6
Other paper		19,634,784	5,352,698	20,220,360	5,577,819	97.1	96.0
<b>Paper Total</b>		<b>1,396,409,916</b>	<b>124,439,960</b>	<b>1,429,913,336</b>	<b>131,939,688</b>	<b>97.7</b>	<b>94.3</b>
Kraftliner (unbleached)		62,813,167	3,716,237	43,399,291	2,521,137	144.7	147.4
Kraftliner (bleached)		3,962,544	296,635	2,943,237	224,364	134.6	132.2
Test liner		20,267,991	906,029	20,671,362	859,366	98.0	105.4
Fluting paper (SCP)		356,439	17,915	361,115	15,129	98.7	118.4
Fluting paper (other)		46,693,569	1,682,662	67,053,813	2,262,817	69.6	74.4
Coated white paperboard (CP95%)		62,548,306	6,631,105	51,138,552	5,521,129	122.3	120.1
Coated white paperboard (other)		128,997,803	10,059,903	126,771,256	9,999,266	101.8	100.6
Uncoated white paperboard (CP95%)		15,747,285	1,658,577	19,436,752	2,196,727	81.0	75.5
Uncoated white paperboard (other)		11,915,907	1,162,156	12,329,517	1,197,587	96.6	97.0
Kraft paperboard		23,685,921	1,636,884	12,355,753	915,284	191.7	178.8
Other paperboards		18,029,910	1,656,849	14,910,069	1,417,790	120.9	116.9
<b>Paperboard Total</b>		<b>395,018,842</b>	<b>29,424,952</b>	<b>371,370,717</b>	<b>27,130,596</b>	<b>106.4</b>	<b>108.5</b>
<b>Paper and Paperboard Total</b>		<b>1,791,428,758</b>	<b>153,864,912</b>	<b>1,801,284,053</b>	<b>159,070,284</b>	<b>99.5</b>	<b>96.7</b>
Hand made paper and paperboard		1,618,833	1,553,561	1,544,951	1,534,750	104.8	101.2
Paper for milk carton		219,944,817	28,355,164	206,919,894	29,250,958	106.3	96.9
Other converted paper total		86,172,841	22,749,267	79,672,370	20,345,661	108.2	111.8
<b>All Kind of Paper Total</b>		<b>2,099,165,249</b>	<b>206,522,904</b>	<b>2,089,421,268</b>	<b>210,201,653</b>	<b>100.5</b>	<b>98.2</b>

**Table 13 Trends in exports of paper & paperboard**

( Kg, FOB, 1,000yen)

Grades	Year	2010		2009		Ratio of the year before (%)	
		Quant.	Val.	Quant.	Val.	Quant.	Val.
Newspaper		57,542,000	2,688,906	114,423,000	5,641,412	50.3	47.7
Printing paper (fine)		143,099,614	12,644,515	111,586,949	9,759,475	128.2	129.6
Printing paper (colored)		21,155,061	2,539,855	17,718,496	2,076,357	119.4	122.3
Printing paper (thin paper)		15,094,641	1,771,462	12,651,101	1,443,237	119.3	122.7
Printing paper (other)		10,758,144	1,187,099	9,439,009	931,863	114.0	127.4
Other graphic purposes		29,021,743	3,642,331	41,056,422	4,376,201	70.7	83.2
Coated paper		469,464,362	36,315,172	264,501,641	23,294,829	177.5	155.9
Coated wood contained paper		396,319,705	28,141,648	268,216,143	20,220,100	147.8	139.2
Sack kraft paper		30,566,536	2,062,957	9,708,773	644,653	314.8	320.0
Other kraft paper		108,937,290	14,420,625	87,456,394	11,463,708	124.6	125.8
Sulphite wrapping paper		6,542	5,645	24,061	6,540	27.2	86.3
Cigarette paper		1,730,049	715,180	1,628,830	663,907	106.2	107.7
Glassine paper		3,887,120	958,838	2,916,781	614,417	133.3	156.1
Tracing paper		31,807	24,190	30,981	25,434	102.7	95.1
Parchment paper, grease proof paper		1,360,331	458,373	1,001,786	313,932	135.8	146.0
Other paper		56,878,524	15,166,036	49,305,231	11,992,747	115.4	126.5
<b>Paper Total</b>		<b>1,345,853,469</b>	<b>122,742,832</b>	<b>991,665,598</b>	<b>93,468,812</b>	<b>135.7</b>	<b>131.3</b>
Kraft liner		10,192,000	816,358	14,735,000	972,938	69.2	83.9
Test liner		45,252,428	2,197,470	9,843,292	568,246	459.7	386.7
Fluting paper (SCP)		418,000	20,181	638,000	35,256	65.5	57.2
Fluting paper (other)		14,409,227	548,209	2,065,913	88,674	697.5	618.2
Coated white paperboard (CP95%)		2,955,469	339,960	733,039	76,491	403.2	444.4
Coated white paperboard (other)		17,583,835	1,890,667	15,855,432	1,480,195	110.9	127.7
Uncoated white paperboard (CP95%)		338,348	24,121	355,904	27,736	95.1	87.0
Uncoated white paperboard (other)		339,846	63,190	281,728	43,910	120.6	143.9
Kraft paperboard (unbleached)		3,032,421	467,568	3,368,166	501,438	90.0	93.2
Color paperboard		136,656	40,438	275,676	56,188	49.6	72.0
Other paperboards		20,816,156	5,017,505	17,362,838	4,246,393	119.9	118.2
<b>Paperboard Total</b>		<b>115,474,386</b>	<b>11,425,667</b>	<b>65,514,988</b>	<b>8,097,465</b>	<b>176.3</b>	<b>141.1</b>
<b>Paper and Paperboard Total</b>		<b>1,461,327,855</b>	<b>134,168,499</b>	<b>1,057,180,586</b>	<b>101,566,277</b>	<b>138.2</b>	<b>132.1</b>
Hand made paper and paperboard		175,779	256,523	156,551	224,277	112.3	114.4
Self-copy paper		5,615,545	937,756	5,859,635	1,000,889	95.8	93.7
Thermal transfer paper		637,211	441,751	471,384	516,998	135.2	85.4
Cellophane		6,504,793	2,831,244	5,415,964	2,361,388	120.1	119.9
Converted paper total		249,865,193	85,883,563	199,979,390	71,637,582	124.9	119.9
<b>All Kind of Paper Total</b>		<b>1,724,126,376</b>	<b>224,519,336</b>	<b>1,269,063,510</b>	<b>177,307,411</b>	<b>135.9</b>	<b>126.6</b>

# Recovered paper generation / Distribution route (2010, in 1,000mt, %)



※Market pulp /0.8yield

**Table 14 Roles of recovered paper recycling by agents**

Agents by channel	recovered paper item	Sellers or generator	Buyers	Function
Collectors	Old news Old magazines Old corrugated containers	Home Wholesale store Station, Market Office buildings	Scrap dealers	1. They collect recovered paper from the steady points where are in the wide distribution of towns. 2. Collectors collect without money 3. Scrap dealers buy with money.
Special Collectors (Commercial waste)	Old corrugated containers Old news Kraft paper waste	Super market Department store	Recovered paper dealers	1. They have some of the fixed routes already with contract. 2. They buy with money, but in some case, receive the fee for clean up.
Special Collectors (Industrial waste)	Cutting paper waste Old corrugated containers Box board waste	Paper converter or printer	Recovered paper dealers	1. They have some of the fixed route already with contract. 2. They collect high quality Grades.
Scrap dealer (They recover many kinds of waste )	Old news Old magazines Old corrugated containers	Collectors	Paperstock dealers Lot dealers	1. Assort, clean up, compacting of recovered paper. 2. In some case, they have a share of the fixed point on collection system.
Lot dealers ( including agents )	All kinds of recovered paper	Collectors	Recovered paper dealers	1. Sometimes, they carry wastepaper to the papermaker by order of recovered paper dealer.
Paper stock dealers	All kinds of recovered paper	Scrap dealers Lot dealers	Paper makers	1. Sorting and bailing of recovered paper. 2. They have stock as a measure of the demand and supply control. function. 3. They must be registered for the paper stock section of the paper maker mills as his trader.

**Table 15 2010 Estimation of recovery rate by grades**

( METRIC TON )

Grades	Recovery	Consumption of Paper or Paperboard	2010 recovery rate (%)	2009 recovery rate (%)
Hard white shavings, white card	} 5,805,005	} 12,626,792	} 46.0	} 46.1
White woody shavings, White manila				
Fine paper printed ( incl. coated paper )				
Quires woody paper printed				
Old magazines				
Old news	4,872,691	3,337,086	146.0	149.6
Kraft browns	} 10,101,839	} 9,266,336	} 109.0	} 110.8
Old Corrugated containers				
Box board cuttings	935,496	2,521,662	37.1	41.7
Total	21,715,031	27,751,876	78.2	79.7

Attn. :

1. Recovery quantity = Shipment from papermakers + Exports - Imports + Market pulp (0.8 yield and produced with recovered paper)
2. Consumption of paper or paperboard in Japan = Shipment from papermakers - Exports - Imports
3. Consumption of paper or paperboard
  - a) The 100% waste paper of Printing or Writing paper, Drawing paper, Other wrapping paper, Machine gazed paper, Household tissue, Thin paper become of Hard white shavings, White woody shavings, Fine paper printed, Quires woody paper printed, and 3% of Newsprint, Manila board become of the above grades after used.
  - b) About 97% of Newsprint become of Old news after used
  - c) All of Kraft papers ( rough on the both faces ) become of Kraft browns after used.
  - d) All of carton box become of Old corrugated containers after used.
  - e) All of paperboards ( except Manila board ), Core board, Wrapping paper, Building board, other paperboards and 97% of Manila board become of boxboard cutting after used.

**Table 16 The estimation rate of recovered paper consumption for paper production. (2010)**

Grades	Total	Hard white shavings, white card	White woody shavings, white manila	Fine paper printed	Kraft Borowns	Quires woody paper printed	Old news	Old magazines	Old corrugated containers	Box board cuttings
Newsprint	0.8896	—	0.0006	0.0076	—	—	0.8201	0.0613	—	—
Printing paper, writing paper	0.2481	0.0016	0.0002	0.0712	—	0.0141	0.1392	0.0218	—	—
Packaging paper	0.0793	0.0001	—	0.0231	0.0114	—	0.0394	0.0032	0.0021	—
House hold tissue	0.5417	—	—	0.5165	—	—	0.0252	—	—	—
Other paper	0.0281	0.0003	—	0.0134	—	—	0.0021	0.0108	0.0015	—
Paper total	0.3912	0.0009	0.0002	0.1015	0.0006	0.0082	0.2537	0.0259	0.0002	—
Kraft Liner	0.9947	0.0042	0.0027	0.0085	0.0074	0.0000	0.0024	0.0941	0.8563	0.0191
Test liner (Jute Liner)	1.0640	0.0050	0.0072	0.0159	0.0069	—	0.0055	0.2757	0.7171	0.0307
Recycled liner	1.0732	0.0688	0.0770	0.0168	0.0020	0.0156	0.0423	0.2536	0.5449	0.0522
High garade medium	0.9852	—	—	0.0001	0.0041	—	0.0034	0.0807	0.8889	0.0080
Recycled medium	1.0393	—	—	0.0	0.0009	—	0.0001	0.0814	0.9209	0.0360
Manila paperboard	0.4582	0.0037	0.0036	0.1291	—	0.0021	0.0683	0.2507	0.0004	0.0003
White paperboard	1.0535	0.0195	0.0053	0.1889	—	0.0136	0.1246	0.6165	0.0095	0.0756
Chipboard (Colored Board )	1.2079	0.0190	0.0081	0.0047	0.0111	0.0049	0.0782	0.4187	0.1606	0.5026
Construction board	1.0218	0.0057	0.0712	—	—	—	0.1726	0.2138	0.4738	0.0847
Other paperboard	0.9460	0.0048	0.0015	0.0084	0.0164	—	0.0056	0.0461	0.84430	0.0189
Paperboard Total	0.9913	0.0052	0.0046	0.0284	0.0048	0.0015	0.0208	0.1706	0.7198	0.0356
Total	0.6320	0.0027	0.0020	0.0721	0.0023	0.0055	0.1603	0.0840	0.2888	0.0143

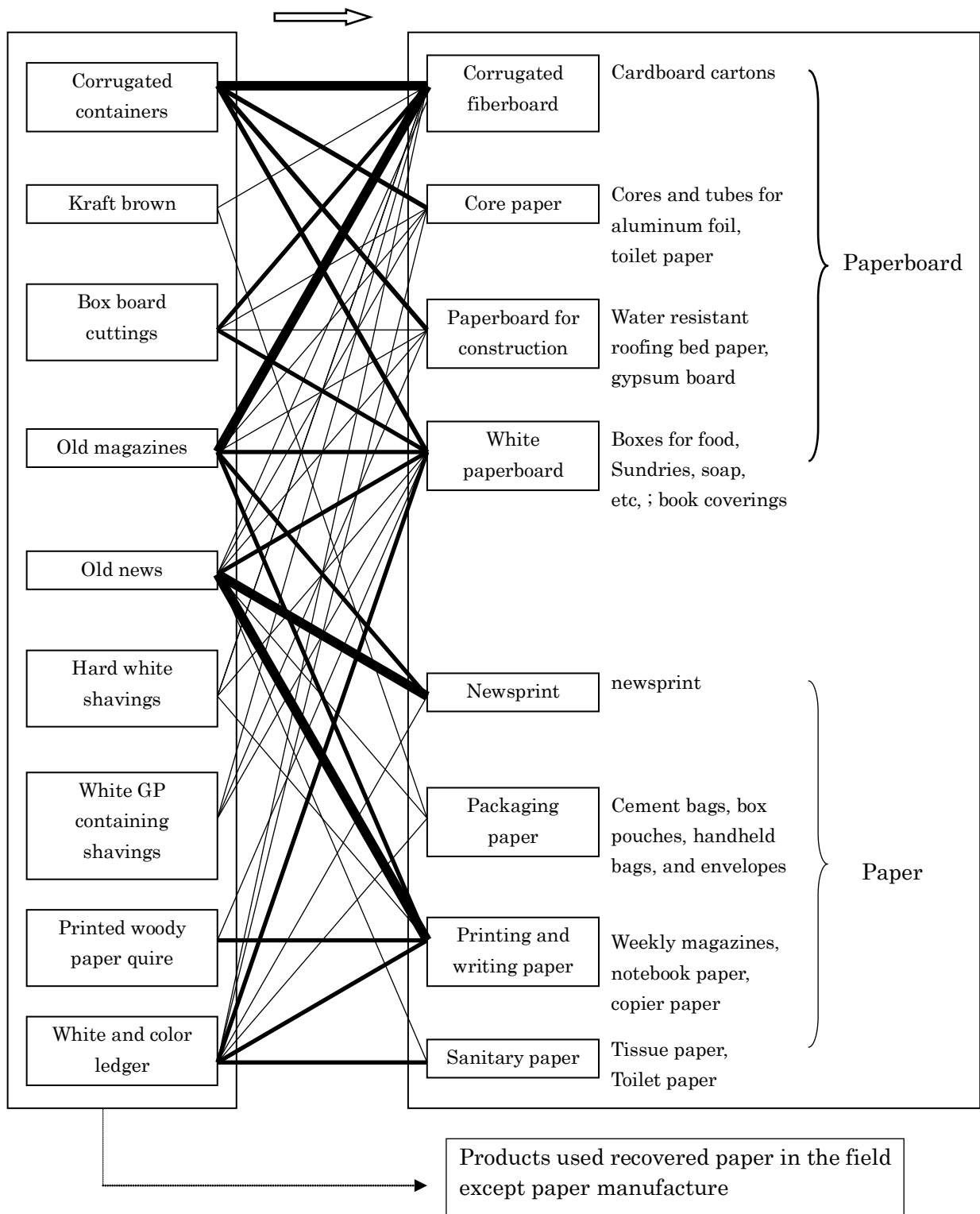
Attn. The recovered paper consumption for the paper or paperboard making by grade / The paper or paperboard production

Estimate by pulp & paper annual statistics ,monthly statistics of paper,print, plastic and rubber product by METI and investigation of recovered paper consumption by P.R.P.C

**Table 17 Use of recovered paper**

[recovered paper grades]

[paper & paperboard grades]



(note)

- Consumption 1,000 thousand metric ton/year and over
- Consumption 100 thousand metric ton/year and over
- Consumption 10 thousand metric ton/year and over

**Table 18 Trends of quantity and composition ratio of products used recovered paper<sup>(n.1)</sup> in the field except paper manufacture**

product field \ year	2000	2001	2003	2004	2005	2006	2007	2008	2009	2010
Solid fiberboard	30,834	29,282	33,921	34,823	23,953	29,025	34,630	24,776	18,770	22,200
	11.4	10.5	10.2	8.2	4.8	5.2	5.4	4.1	2.9	2.2
Animal bedding	6,278	6,107	5,895	6,999	7,221	7,452	6,568	5,580	5,550	3,500
	2.3	2.2	1.8	1.6	1.4	1.3	1.0	0.9	0.9	0.4
Cellulose insulation	11,120	11,100	11,010	12,180	12,652	14,637	14,825	16,119	14,866	14,942
	4.1	4.0	3.3	2.9	2.5	2.6	2.3	2.6	2.3	1.5
Molded pulp	46,628	47,051	47,814	49,680	46,406	53,145	52,009	47,120	43,652	41,187
	17.2	16.8	14.3	11.6	9.2	9.5	8.2	7.7	6.8	4.1
RPF <sup>(n.2)</sup>	128,715	134,400	184,824	265,268	371,943	417,317	475,102	465,509	509,084	865,988
	47.4	48.0	55.4	62.2	73.9	74.3	74.5	76.2	79.8	86.7
Dehydrate assistant <sup>(n.3)</sup> Cover material <sup>(n.4)</sup>	4,270	3,368	3,594	4,825	4,394	5,558	6,160	4,595	5,300	8,600
	1.6	1.2	1.1	1.1	0.9	1.0	1.0	0.8	0.8	0.9
Filler for building materials	42,000	42,200	42,000	43,000	33,300	31,500	45,000	41,300	35,900	35,400
	15.5	15.1	12.6	10.1	6.6	5.6	7.1	6.8	5.6	3.5
Others <sup>(n.5)</sup>	1,459	6,282	4,606	9,745	3,253	3,006	3,832	5,620	4,806	6,873
	0.5	2.2	1.4	2.3	0.6	0.5	0.6	0.9	0.8	0.7
Product total mass	271,304	279,790	333,664	426,520	503,122	561,640	638,126	610,619	637,928	998,690
Total mass of used recovered paper	188,204	181,842	202,303	234,715	258,422	270,369	285,543	252,686	242,825	286,949
Ratio of used recovered paper <sup>(n.6)</sup>	69.4	65.0	60.6	55.0	51.4	48.1	44.7	41.4	38.1	28.7

note : upper/lower = Product mass(metric ton)/Composition ratio(percent)

n.1 : include wastepaper

n.2: Refuse Paper & Plastic Fuel

n.3: Assistant which dehydrates drainage and sewage

n.4: Material which covers waste in landfill

n.5: Packaging protection, Deodorant, Paper clay, Oil and Liquid absorb material, Highway seeding and so on

n.6: (Total mass of used recovered paper/Product total mass) × 100

**Table19 The list of Japanese standard qualities of recovered paper by Paper Recycling Promotion Center**

Revised: Feb. 24, 2010

Statistical Group	No	Grade	Description
Hard white shavings; cards	1	(Japanese:Jouhaku) White shavings	Shavings or sheets of white unprinted wood-free paper collected from bookbinders, printers, and sheet cutting facilities
	2	(Japanese:Kuriimu Jouhaku) Cream shavings	Shavings or sheets of cream-colored unprinted wood-free paper collected from bookbinders, printers, and sheet cutting facilities.
	3	(Japanese:Keihaku) Ruled-paper shavings	Shavings or sheets of white or cream-colored unprinted wood-free paper with red or blue ruling or register marks, collected from bookbinders, printers, and sheet cutting facilities.
White woody shavings; white manila	4	(Japanese:Tokuhaku) High-grade white wood-containing shavings	Shavings or sheets of white unprinted high-grade wood-containing paper collected from bookbinders, printers, and sheet cutting facilities.
	5	(Japanese:Tokuhaku) White wood-containing shavings	Shavings or sheets of white unprinted groundwood paper collected from bookbinders, printers, and newspaper printing plants.
Fine printed paper	6	(Japanese:Mozou) White ledger	White wood-free paper printed with black ink.
	7	(Japanese:Irojou) Color ledger	White wood-free uncoated or coated paper printed in color.
	8	(Japanese:Kento) Wood-free shavings with partial color print	Shavings of white uncoated or coated wood-free paper, some of which is color printed, collected from bookbinders and printers.
	9	(Japanese:Shiroaato) Coated white shavings	Shavings or sheets of unprinted coated paper collected from bookbinders and printers.
	10	(Japanese:Tirashi) Fliers	high-grade wood-containing white paper, etc.
	11	(Japanese:Inryo-you Kamipack) Polycoated milk carton stock	Washed used household polycoated beverage cartons, and shavings and sheets of industrially generated polycoated milk carton board, with no aluminum content.
	12	(Japanese:Ofisu-peepaa) Sorted office paper	Paper and paper products from offices, consisting primarily of loose black-printed or color-printed paper and copier paper.
Woody printed paper	13	(Japanese:Tokujoyugiri) High-grade color-printed wood-containing shavings	Shavings of high-grade wood-containing white paper printed in various colors, collected from bookbinders and printers.
	14	(Japanese:Betsu Jougiri, Manga Sairaku) Color-printed wood-containing shavings	Shavings of groundwood paper printed in various colors, collected from bookbinders and printers.
	15	(Japanese:Chuuzara hogo) High-grade wood-containing waste	Sheets of high-grade wood-containing paper, black-printed or color-printed, and groundwood paper collected from bookbinders and printers.
Old newsprint	16	(Japanese:Shinbun) Old newsprint	Old newspapers and Inserts collected from residences, companies, public offices, etc.
Old magazines	17	(Japanese:Zasshi) Old magazines	Old magazines, old books, returned books, remaindered books, and pamphlets collected from residences, companies, public offices, etc.

Statistical Group	No	Grade	Description
Kraft browns	18	(Japanese:Kiricha) New brown kraft cuttings, unprinted brown kraft	Cuttings and sheets of unprinted brown kraft paper collected from kraft paper sack factories.
	19	(Japanese:Zattai) Used brown kraft sacks	Used brown kraft sacks for rice, wheat, etc.
	20	(Japanese:Kurahuto Danbouru)	Kraft corrugated cuttings and old kraft corrugated containers. (Comprised mainly of imports.)
Old corrugated containers	21	(Japanese:Danbouru) Corrugated container	Old corrugated containers collected from offices, residences, etc.
	22	(Japanese:Shin Danbouru) New Double-lined kraft corrugated cuttings	New corrugated cuttings and sheets from packaging products factories.
Boxboard cuttings	23	(Japanese:Wanpu) Mill wrapper	Used wrapping for paper and paperboard.
	24	(Japanese:Joudaishi) White paperboard cuttings	Cuttings and die cuttings of white paperboard, chipboard, etc. collected from carton makers.
	25	(Japanese:Daishi) Chipboard cuttings (Carton)	Old cartons from offices, etc.
	26	(Japanese:Zatsugami) Sorted residential old paper and paperboard	Paper, paperboard, and products thereof, collected from residences, exclusive of (separated from) old newsprint, old magazines, old corrugated containers and milk cartons.

## Table20 The trends in price of recovered papers

[ Yen/Kg. (until 2007 Mar.), Yen/Ton (after 2007 Apr.), pressed]

Year, Mon.	Hard white * shavings, white card	Woody paper * shavings (high grade)	White ledger * (white printed woodfree)	Color ledger * (Color printed woodfree)	Old news	Old magazines	Old corrugated containers
2007 Apr	40,000~46,000	24,000~39,000	19,000~20,000	16,000	14,000	11,000	13,000
May	40,000~46,000	24,000~39,000	19,000~20,000	16,000	14,000	11,000	13,000
Jun	40,000~46,000	24,000~39,000	19,000~20,000	16,000	14,000	11,000	13,000
Jul	40,000~46,000	24,000~39,000	19,000~20,000	16,000	14,000	11,000	15,000
Aug	40,000~46,000	24,000~39,000	19,000~22,000	16,000~18,000	14,000	11,000	15,000
Sep	42,000~48,000	26,000~39,000	21,000~22,000	18,000	14,000	11,000	15,000
Oct	42,000~48,000	26,000~39,000	21,000~24,000	18,000~20,000	14,000~	11,000~13,000	15,000~
Nov	42,000~48,000	26,000~39,000	23,000~26,000	20,000~22,000	14,000~	11,000~13,000	15,000~
Dec	44,000~50,000	26,000~39,000	25,000~26,000	22,000	15,000~16,000	13,000	15,000~17,000
2008 Jan	44,000~50,000	26,000~39,000	25,000~26,000	22,000	15,000~16,000	13,000	15,000~17,000
Feb	44,000~50,000	26,000~39,000	25,000~28,000	22,000~24,000	15,000~16,000	13,000	15,000~17,000
Mar	44,000~50,000	26,000~39,000	25,000~28,000	24,000	18,000~	15,000~	18,000~
Apr	44,000~50,000	26,000~39,000	27,000~28,000	24,000	18,000~	15,000~	18,000~
May	44,000~50,000	26,000~39,000	27,000~28,000	24,000	18,000~	15,000~	18,000~
Jun	44,000~50,000	26,000~39,000	27,000~28,000	24,000	18,000~20,000	15,000~	18,000~
Jul	44,000~50,000	26,000~39,000	27,000~28,000	24,000	18,000~20,000	15,000~	18,000~
Aug	44,000~50,000	26,000~39,000	27,000~28,000	24,000	18,000~20,000	15,000~	18,000~
Sep	44,000~50,000	26,000~39,000	27,000~28,000	24,000	20,000	16,000~17,000	18,000~
Oct	44,000~50,000	26,000~39,000	27,000~28,000	24,000	20,000	16,000~17,000	18,000~
Nov	44,000~50,000	26,000~39,000	27,000~28,000	24,000	20,000	16,000~17,000	18,000~
Dec	42,000~48,000	26,000~39,000	25,000~28,000	22,000	20,000	16,000~17,000	18,000~
2009 Jan	40,000~46,000	24,000~39,000	23,000~24,000	19,000~20,000	20,000	16,000~17,000	18,000~
Feb	37,000~43,000	23,000~39,000	21,000~22,000	17,000~18,000	15,000~17,000	13,000~15,000	15,000
Mar	34,000~40,000	21,000~39,000	19,000~20,000	15,000~16,000	13,000~15,000	11,000~13,000	15,000
Apr	34,000~40,000	21,000~39,000	17,000~18,000	13,000~14,000	13,000	11,000	15,000
May	34,000~40,000	21,000~39,000	17,000~18,000	13,000~14,000	13,000	11,000	15,000
Jun	34,000~40,000	21,000~39,000	17,000~18,000	13,000~14,000	13,000	11,000	15,000
Jul	34,000~40,000	21,000~39,000	17,000~18,000	13,000~14,000	13,000	11,000	15,000
Aug	34,000~40,000	21,000~39,000	17,000~18,000	13,000~14,000	13,000	11,000	15,000
Sep	34,000~40,000	21,000~39,000	17,000~18,000	13,000~14,000	13,000	11,000	15,000
Oct	34,000~40,000	21,000~39,000	17,000~18,000	13,000~14,000	13,000	11,000	15,000
Nov	34,000~40,000	21,000~39,000	17,000~18,000	13,000~14,000	13,000	11,000	15,000
Dec	34,000~40,000	21,000~39,000	17,000~18,000	13,000~14,000	13,000	11,000	15,000
2010 Jan	34,000~40,000	21,000~39,000	17,000~18,000	13,000~14,000	13,000	11,000	15,000
Feb	34,000~40,000	21,000~39,000	17,000~18,000	13,000~14,000	13,000	11,000	15,000
Mar	34,000~40,000	21,000~39,000	17,000~18,000	13,000~14,000	13,000	11,000	15,000
Apr	34,000~40,000	21,000~39,000	19,000~20,000	15,000~16,000	15,000	14,000	15,000
May	34,000~40,000	21,000~39,000	19,000~20,000	15,000~16,000	15,000	14,000	15,000
Jun	34,000~40,000	21,000~39,000	19,000~20,000	15,000~16,000	15,000	14,000	15,000
Jul	34,000~40,000	21,000~39,000	19,000~20,000	15,000~16,000	15,000	14,000	15,000
Aug	34,000~40,000	21,000~39,000	19,000~20,000	15,000~16,000	15,000	14,000	15,000
Sep	34,000~40,000	21,000~39,000	19,000~20,000	15,000~16,000	15,000	14,000	15,000
Oct	34,000~40,000	21,000~39,000	21,000~22,000	17,000~18,000	15,000	14,000	15,000
Nov	34,000~40,000	21,000~39,000	21,000~22,000	17,000~18,000	15,000	14,000	15,000
Dec	34,000~40,000	21,000~39,000	21,000~22,000	17,000~18,000	15,000	14,000	15,000
2011 Jan	34,000~40,000	21,000~39,000	21,000~22,000	17,000~18,000	15,000	14,000	15,000
Feb	34,000~40,000	21,000~39,000	21,000~22,000	17,000~18,000	15,000	14,000	15,000
Mar	34,000~40,000	21,000~39,000	21,000~22,000	17,000~18,000	15,000	14,000	15,000
Apr	34,000~40,000	21,000~39,000	21,000~22,000	17,000~18,000	15,000	14,000	15,000
May	34,000~40,000	21,000~39,000	21,000~22,000	17,000~18,000	15,000	14,000	15,000
Jun	34,000~40,000	21,000~39,000	21,000~22,000	17,000~18,000	15,000	14,000	15,000

Attn. The table is showing paper maker's purchase prices in Tokyo except for the figures marked with \* showing prices in Shizuoka area.

From November in 2002, the paper maker's purchase prices are without the delivery cost for white shavings, old news, old magazines and old corrugated containers to mills.

---

---

---

**Paper Recycling Promotion Center  
Office**

Shintomi-cho Building , Irifune 3-10-9

Chuo-ku , Tokyo 104-0042 , JAPAN

Telephone 81-3-3537-6822

E-mail [r-kikaku@prpc.or.jp](mailto:r-kikaku@prpc.or.jp)

URL <http://www.prpc.or.jp>